
Shield of Faith

Memory Book

SECOND EDITION

Annual Publication of
SHIELD OF FAITH BIBLE INSTITUTE
2115 Belle Avenue

NELSON MEMORIAL LIBRARY
Southwestern Assemblies of God College
Waxahachie, Texas 75165

Dedication

Dedicated to the memory of
all those who had a part in
founding the Shield of Faith
Bible Institute

Private Library of
W. B. McCafferty
WAXAHACHIE, TEXAS

73942

ANNUAL STAFF

Editor—Rhoda Watson
Sec.-Treas.—Beulah Ragland
Adv. Mgr.—Sylvan Halsey
Sponsor—E. W. Moore

ASSOCIATE EDITORS
Bearden Chaney Elizabeth Anderson
Juanita Cropp Winnie Schindler
Alva Thompson



ADMINISTRATION BUILDING

Who will the student be in the years to come who may remember one other yet remaining, to whom he may write in a reminiscent mood somewhat after the wording of an old poem:

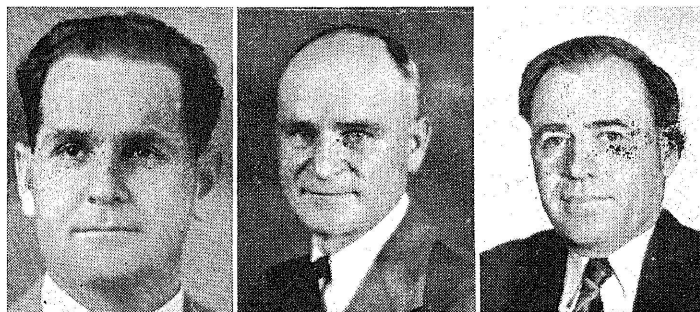
I wandered to the city, Tom,
And stood on Rosen hill,
Where you and I as students, Tom,
Were taught the Master's will.
The same old school stands on the hill,
Its bell still sounds the call
That started us as students, Tom,
Down to the study hall.

Our Classmates sleep in silent graves,
At home and o'er the sea;
And few are left of our old class
Excepting you and me.
But when our time shall come, Tom,
And we are called to go,
We'll meet our old classmates again
Where life's pure waters flow.

—Author Unknown.

By W. B. [unclear]

ADVISORY BOARD



REV. F. D. DAVIS
*Superintendent
Texas District
Assemblies of God*

REV. E. B. CRUMP
*Sec.-Treas. Texas
District Assemblies of God*

REV. WM. B. Mc-
CAFFERTY
*Principal of Bible
Dept., S.O.F.B.I.*

FACTS

The Shield of Faith Bible School will soon be sending out another band of young ministers to preach the precious Pentecostal Truths to a dying world. We want to give a final word of admonition ere you go. When you preach, preach facts. Theories are thrilling. Dreams may be dazzling, but the world is hungry for facts. Firm facts. Fixed facts. Faithful facts. Infallible facts. There are facts about the world; facts that are earthly; but you are to preach facts about God.

The scientist says, "Let's discover the facts." He looks down for his facts, while the preacher looks up. The scientist digs into the earth for facts; the preacher digs into the precious old Bible for his facts.

Here are five facts that the world needs today: 1. The blessed old Bible—the book of God—is a splendid fact. 2. The blood of Jesus Christ will cleanse from sin—all sin—a great fact. 3. The Baptism of the Holy Spirit as in Acts 2:4 will prepare us for a deeper Christian life—a blessed fact. 4. Walking in the light with the power of the Spirit will keep us from sinning—a proven fact. 5. Jesus Christ is coming again in the clouds of heaven with power and great glory—a glorious fact.

Don't worry over WHERE you shall preach. Stake your very life on WHAT you shall preach. The WHERE will take care of itself. Be faithful and preach Facts.

E. B. CRUMP, Sec.-Treas.
Texas District Council.



REV. GUY SHIELDS
Founder and President

Others

Dear Graduating Class of 1939, my brief message to you as well as to all former and present students is, OTHERS!

Jesus saved OTHERS though Himself he could not save. If he were to save OTHERS he could not have himself, so he chose to give himself for OTHERS.

The Apostle Paul expresses himself saying most gladly would he spend and be spent for OTHERS, even though he had liberty to enjoy his meat, yet for OTHERS' sake he was willing to abstain.

The Master said, "Except a corn of wheat fall into the earth and die it abideth alone," but when it dies it produces OTHERS. It was said that when General Booth once wanted to get his message to every Salvation Army Captain, he went to the Western Union and wired the word "OTHERS" around the world.

I took for my motto at this new year's beginning, OTHERS, so my message to you as you go out to face this unfriendly world with its many adventures, adversities, disappointments, sorrows, joys, or triumphs of victories, always bear in mind that no man liveth to himself and that no man dieth to himself. He that would be great must be servant of all. Whatever you do, or wherever you go, live to bless OTHERS.

BROTHER SHIELDS.



MILLARD E. COLLINS
Superintendent Shield of Faith Bible Institute

To the Graduating Classes of '39

These words are from the pen of one who has been your instructor and servant for several months. You have been an inspiration to me. Your consecrated Christian life, your earnest zeal and burning desire to overcome all obstacles in order to follow the leading of the Lord, has encouraged others to have a greater determination to be faithful to the end.

As you go forth in the whitened harvest field to labour for the Master, remember that our Father is no respecter of persons. What He has done with others, He can do with you. Keep yourself humble under the mighty hand of God and He will exalt you in due time. God resisteth the proud, but giveth grace to the humble. The way up is down. The price of having friends is being friendly. The price of reward is service. The price of souls is sacrifice. The price of sin is death. Whatsoever a man soweth, that shall he also reap.

Your Superintendent,
MILLARD E. COLLINS.



FACULTY

FIRST ROW (Left to Right)

MILLARD E. COLLINS
 Superintendent
 Vice President
Old Testament
New Testament
Pastoral Theology

WM. BURTON Mc-
 CAFFERTY
 Bible School Principal
Doctrine
Prophecy
Dispensations
Epistles
Typology

MRS. WM. B. Mc-
 CAFFERTY
 Dean of Women
 Supervisor of Missions
 Dept.
History of Missions
D.V.B.S.

R. D. ZOOK
 Dean of Men
Church History
Gifts of the Spirit
Personal Evangelism
Parliamentary Law

E. W. MOORE
 High School Principal
Social Science

SECOND ROW

P. V. JONES
Advanced English
Mathematics
Life of Christ
Life of Paul

MRS. F. H. WILSON
Spanish
English

MRS. J. G. SLATON
 Head of Commercial Dept.
Typing
Bookkeeping
Junior Business

JOSEPH M. GUTEL
Science
Geometry

HAROLD S. MILES
 Music Director
Wind Instruments
Rudiments
Conducting

THIRD ROW

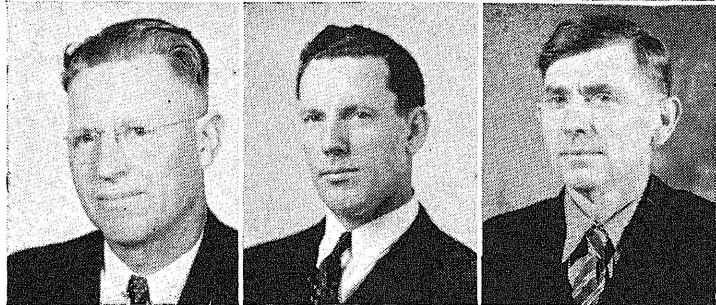
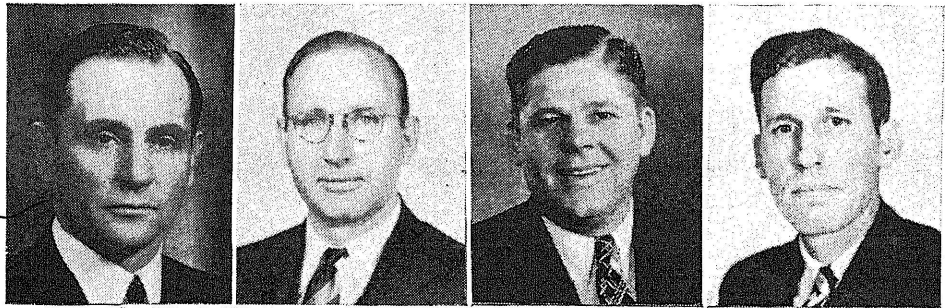
I. L. FULLERTON
 Head of String Instrument
 Department

ROBERT S. ARNOLD
 President of Nat'l. Music Co.
Voice
Harmony

MRS. LOUIE FLORY
Piano

Deceased

Deceased



Deceased

OFFICIAL BOARD AND TRUSTEES

FIRST ROW (Left to Right)

REV. GUY SHIELDS
President and Founder
Official Board Member

M. E. COLLINS
Vice-President
Superintendent
Official Board Member

REV. O. B. BRAUNE
Business Manager
Official Board Member
Pastor Rosen Heights As-
sembly of God Church

Wm. F. SHIP
Secretary-Treasurer
Official Board Member

SECOND ROW

E. C. KING
Official Board Member

REV. C. L. STEWART
Official Board Member
Presbyter of Ft. Worth
Section
Pastor Fourteenth and
Boulevard Church

W. L. SHIELDS
Official Board Member
S.O.F. School Farm



SUPERVISORS AND OFFICE HELP

FIRST ROW (Left to Right)

LORRAINE WISE
Asst. Sec-Treas.

MRS. JOE PIERSON
Asst. Editor of Shield of
Faith Paper

ISABELLE WELLER
Student-Teacher
Shorthand
Stenography

FAITH MARTINDALE
Secretary to President
Guy Shields

SECOND ROW

MRS. LOIS FLOWERS
Dietitian

MRS. OMA FULLERTON
Book Store Manager

MRS. MILTON BUCK
Laundry Supervisor

T. H. HUNTER
Farm Supervisor

The Origin

OF THE SHIELD OF FAITH BIBLE INSTITUTE

The SHIELD OF FAITH BIBLE INSTITUTE originated in the heart of its founder as a result of love for young people and Christian workers. Having a burning desire to preserve their character, and shield their faith, and train them for usefulness, opening a door through which they might pass into life's harvest field.

Rev. Guy Shields had been active in the gospel ministry from the time he was a boy, but having been deprived of a religious education and training, he began to feel more keenly the need of such training. This gave him a desire to somehow help others to secure that which he, himself, had been denied. He had held successful evangelistic meetings throughout the various states of America. He had built and established a number of churches; and at this period of his ministry, was pastoring a thriving spiritual church, located at 900 North Pierce Street in Amarillo, Texas. He was also serving as an official in his organization, promoting a Home Missionary program of opening and establishing other churches throughout the Panhandle of Texas, with his church serving as the hub of the wheel in the program.

While in constant communion with God and much desperate prayer in his prayer chambers, this burden for training workers formed itself into a vision. Making clear to him the idea and need of a unique training school where boys and girls in their teen-age could be given a Bible education and experience in Christian service while securing their literary education. Also where young ministers could secure their practical Bible School training.

This vision was inspired and quickened into action through faith and counsel with his associates. These associates gave their pledge of cooperation and confidence of trust, promising to help and stand with him through the great sacrifice and struggle which, of necessity must follow, to establish such an institution. There were none connected with this ambition, who had any available means of finance for such an institution. Therefore, with a perfect assurance in his heart from which this vision originated, he went forth with a determination to see it through or die in the effort. Rev. Shields stepped out upon faith; faith similar to that of Peter when he stepped down upon the water, announced his vision publicly from his pulpit, and began to de-

clare to the world that such a school would open in connection with his pastorate. But there was not a dime in sight, no faculty and no building. Hearts full of zeal began praying unitedly and desperately that God would lead the way in the establishing of this institution.

A lot, with an eight room house on it, 50 feet by 175 feet, directly across from the church was secured and excavating with a pick and shovel and wheel-barrow, led by Rev. Shields, began for the erecting of the school building. His secretaries began, busy at the typewriters, getting out letters and sending out announcements, and advertising the establishing of the school. Money and materials began to come from various sources. Capable teachers offered their services. Thus, SHIELD OF FAITH SCHOOL opened September 15, 1931, and classes were carried on in the church building until January 1, at which time, amid shouts and praises to God for what had been done, the school was moved to the building recently finished, which consisted of a 40 by 80 concrete brick and tile structure with only the first story and temporary roof prepared for offices and class rooms.

The name *Shield of Faith* was chosen, and the school emblem was designed from Eph. 6:16-17, where the Apostle Paul tells us to put on the whole armour of God and to stand, having your loins girt about with truth and having on the breastplate of righteousness, and your feet shod with the gospel of the preparation of peace, above all taking the Shield of Faith wherewith you shall be able to quench all the fiery darts of the wicked and take the helmet of salvation and the sword of the spirit which is the word of God. Thus, the ultimate purpose of the institution is to put this Christian armour of righteousness upon young men and women; and shield their faith in God from the wave of modern infidelity, which is sweeping through our country and train them for a life of usefulness to serve humanity; stirring within them, loyalty to our God, loyalty to our Nation and Flag, and prepare them to live in Heaven throughout eternity with the redeemed of the Lord.

We trust that you will pray for the success of the SHIELD OF FAITH SCHOOL, and whatever you contribute will be greatly appreciated and used for the training of young men and women.

BIBLE SCHOOL DEPARTMENT



Scriptural Knowledge, A Safeguard

W. B. McCAFFERTY, Bible School Principal

The Shield of Faith Bible Institute is dedicated to the Education of our youth in the knowledge of God as contained in the Bible. Its purpose is to equip the student with a Biblical training that will be an effectual means of service in the great harvest field; to give him an armor of truth and righteousness that will stand him in good stead on the battle field of life. The student that goes

forth from this Institution thus trained and armed need never fear the onslaughts of the enemy of the soul.

A knowledge of God and His word is a safeguard against every attack of satanic hate and wickedness, a fortification that cannot be taken. Stay, O student, within the walls of the impregnable fortress of the Holy Scriptures, over which the banner of eternal ages forever waves.

Remember that the Bible is, and has always been, the foundation of civilization, the Magna Charta of spiritual freedom, the bulwark of national prosperity, the strength of manhood and womanhood, the undergirding of character and a godly personality. It is the hammer that breaks the rocks of unbelief and skepticism to pieces; a light and lamp under the feet of the saints, and a star of hope in the night of sin. It is the bread of divine life; the fountain of living water in a desert place, and the sword of the eternal Spirit, with which the soldier of the Lord may win every battle with sin.

*Here is a light; see it shine;
Take it brother, it is thine.
It will guide thee on thy way
To the land of perfect day.*

*God's true word, the lamp of life,
Can sustain thee in the strife—
Can uphold thee in the fight—
Can in darkness give thee light.*

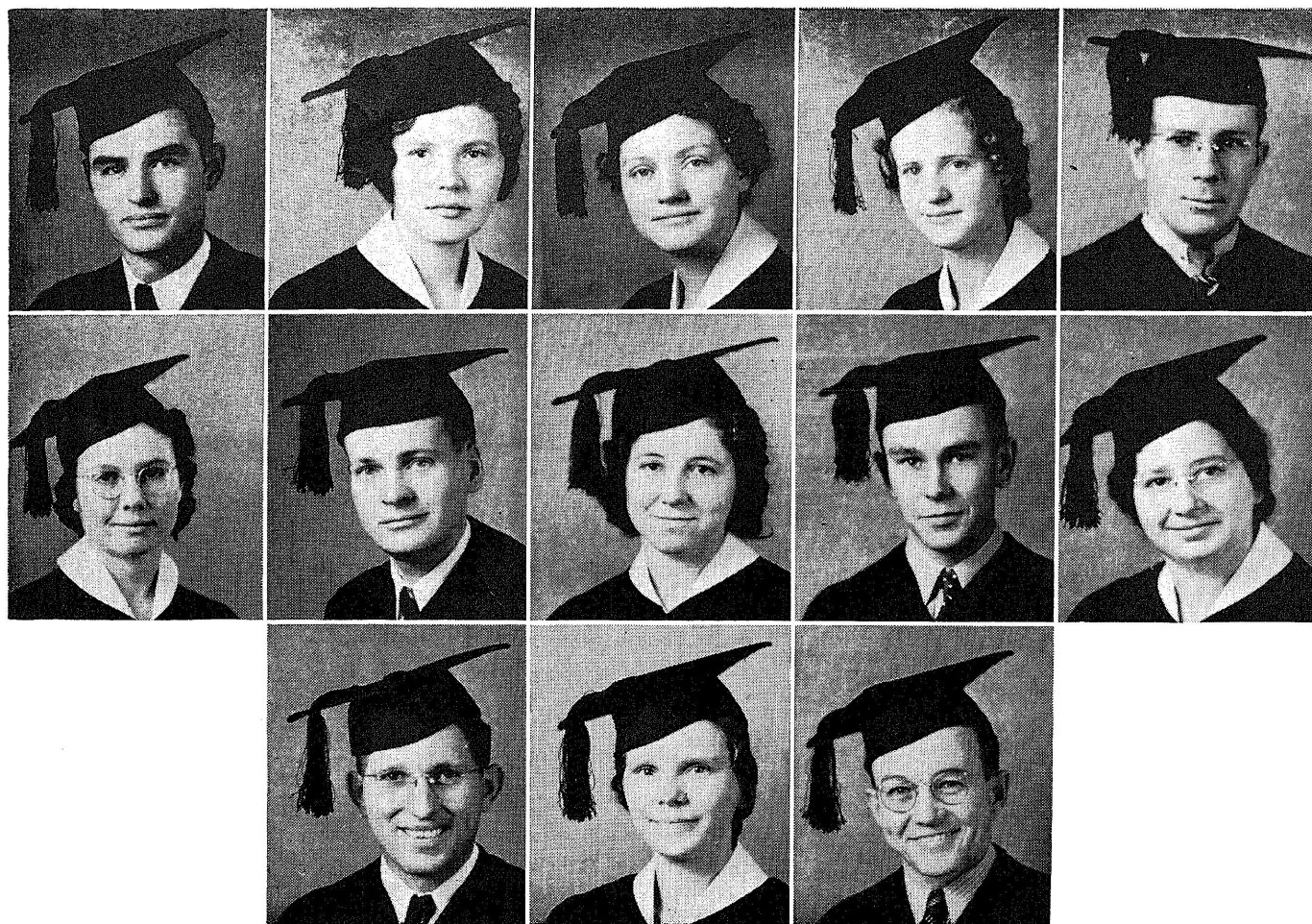
*This true light can ne'er expire;
It is lit with heaven's fire.
Take the light of grace divine,
Read its pages, line on line.*

*If thou then would find the way
To the land of perfect day,
Take the light of God divine;
Take it brother, it is thine.*

—W. B. McCafferty.

CLASS MOTTO: "Finished to Begin."

SENIOR BIBLE CLASS



FIRST ROW (Left to Right)

BEARDEN CHANEY
President
Out Station
Evangelist
2 Tim. 1:12
Breckenridge, Texas

RHODA WATSON
Vice-President
Orchestra
String Band
Ps. 19:14
Fort Worth, Texas

BEUNAH RAGLAND
Sec.-Treas.
Missionary Prayer Band
Ps. 121:1
Abernathy, Texas

ELIZABETH ANDERSON
Out Station
Orchestra
Librarian
Ps. 37:4
Biloxi, Miss.

ALVA THOMPSON
Class Reporter
Out Station
Evangelist
Orchestra
I John 1:7
Lithia, Florida

SECOND ROW

JUANITA RAGLAND
Out Station
Missionary Prayer Band
Isa. 41:10
Abernathy, Texas

ARTHUR HANSON
Evangelist
Phil. 4:13
Grand Island, Neb.

RUTH HANSON
Class Reporter
Orchestra
String Band
Jer. 32:17
Grand Island, Neb.

SYLVAN HALSEY
Pastor
Out Station
Jno. 3:37
Dalton, Neb.

MRS. SYLVAN HALSEY
Out Station
Rom. 8:28
Dalton, Neb.

THIRD ROW

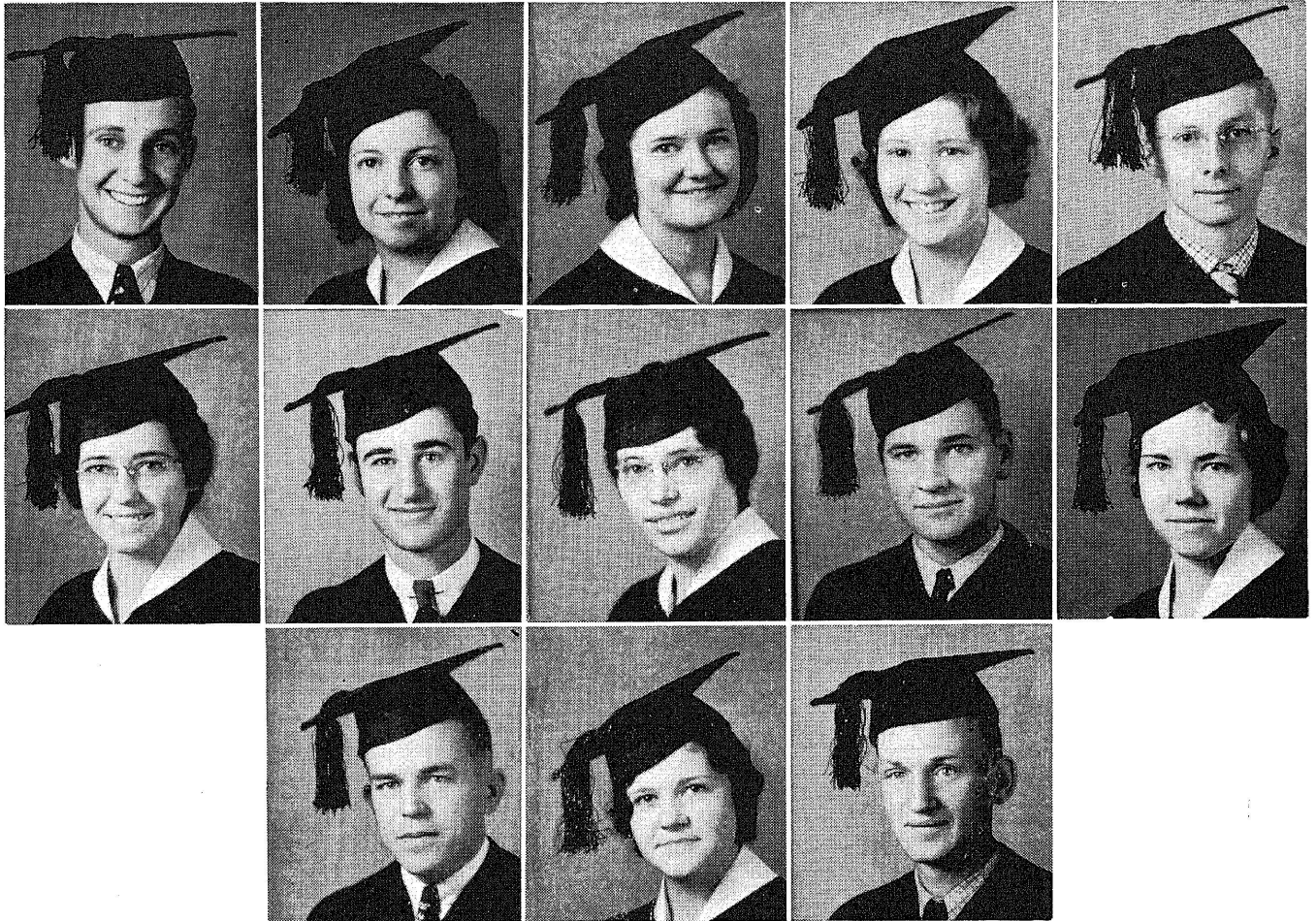
LOIS FLOWERS
Missionary
Out Station
Psa. 16:1
Fort Worth, Texas

MRS. RUTHIE SMITH
Missionary to South America
Jer. 32:27
Fort Worth, Texas

VICTOR SMITH
Missionary to South America
Isa. 6:8
Fort Worth, Texas

"... Forgetting those things which are behind, and reaching forth unto those things which are before. I press toward the mark for the prize of the high calling of God in Christ Jesus." (Phil. 3:13,14).

SENIOR BIBLE CLASS



FIRST ROW (Left to Right)

JOE NASH
Out Station
Evangelist
Trio
I Tim. 4:8
La Sara, Texas

LILLIAN ZOOK
Out Station
Girls String Band
Trio
Rom. 8:28
Fort Worth, Texas

ESTHER MARTIN
Girls String Band
Orchestra
Ps. 15:7
Fort Morgan, Colo.

FREDNA CLACK
Girls String Band
Orchestra
Mark 11:24
Dallas, Texas

PAUL ZOOK
Out Station
Evangelist
Trio
Ps. 37:4
Fort Worth, Texas

SECOND ROW

IVA BATTERTON
Out Station
Home Missionary
Heb. 13:8
Okmulgee, Okla.

J. T. BAYLESS
Out Station
Evangelist
II Tim. 3:15
Venus, Texas

IONE McPHERSON
Missionary to India
Ps. 37:5
Thornton, Texas

NORMAN McCUTCHIN
Out Station
String Band
Pastor
Matt. 3:33
Austin, Texas

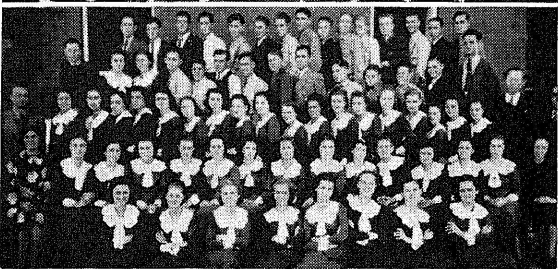
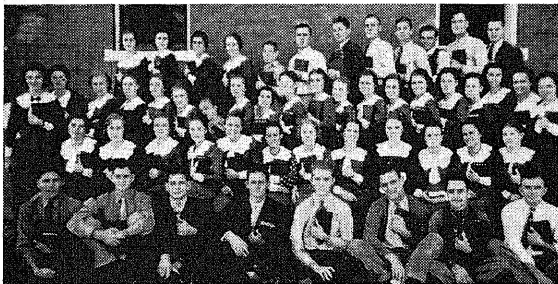
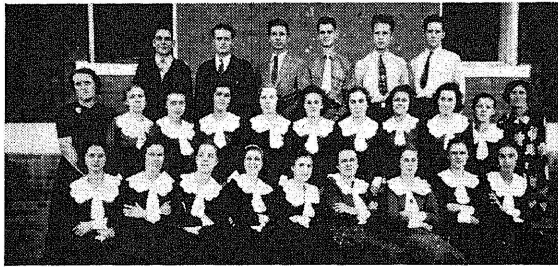
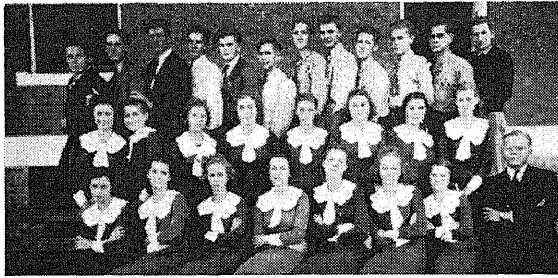
JUANITA SHIELDS
Out Station
Rom. 8:28
Jacksboro, Texas

THIRD ROW

LEAVIE ALLEN
Out Station
Evangelist
Gal. 6:9
Lithia, Florida

MARY JO BARNETT
Evangelist
Rev. 2:10
Electra, Texas

HOWARD DAY
Pastor
Matt. 11:28
San Antonio, Texas



Reading From Top to Bottom:

High School "Sophs"

Mrs. Flory and her piano students

Old Testament Class

Bible School Department

High School Department

FROM SORROW INTO JOY

Deepest sorrow and disappointment
Filled the disciples eyes with tears,
As they listened to their Saviour
Speak to them of coming years.

That night he said, "Dear friends, I'll
leave you,
But I'll leave you not alone,
I will send to you the comforter,
Because I leave and go back home."

"And for you it is expedient
That I should go away
And send the Holy Spirit
To abide with you for aye."

"If I never leave you,
The comforter cannot come;
But I will pray the Father
And to you He then shall come."

"So do not be downhearted
Nor let your heart be sad;
Look up! I'll send the Holy Spirit
Rejoice and be made glad."

"And remember, if you love me,
To keep your Lord's command,
Wait for the promise that I leave you,
For 'tis sent by God's own hand."

So they went into Jerusalem
One hundred twenty saints in all,
They tarried for seven days and nights,
For the Holy Ghost to fall.

Then the power of God from heaven,
Came down like a rushing wind,
Filled all the place where they were
sitting,
Burned out all dross, guilt and sin.

And they all received the promise
That he had told them about
And they spoke in other tongues
Began to sing and shout.

This comforter Jesus promised
Had turned their sorrow into joy,
For he revealed Christ unto them
And their tongues he then employed.

Speaking out in other language,
Adorning the name of Christ their king
Worshiping, praising, blessing, adorning,
They made Jerusalem with Praises ring.

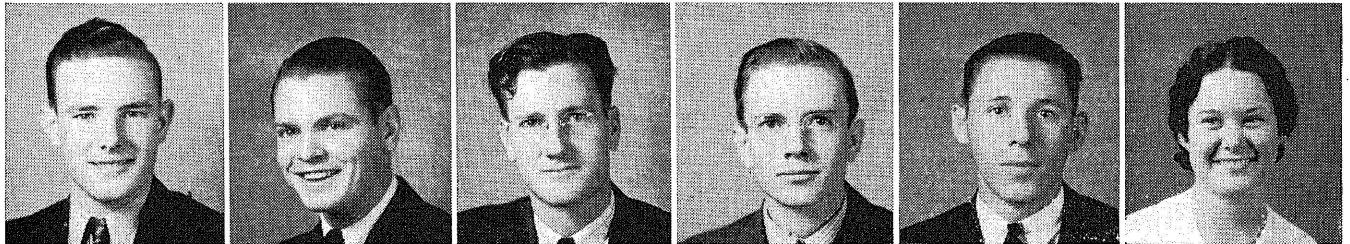
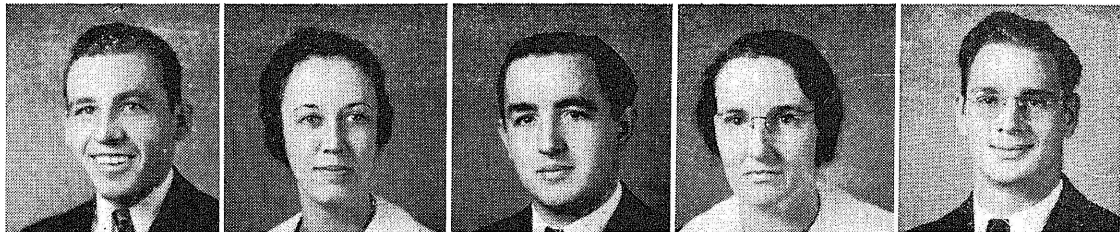
This is that which the prophet had
spoken,
In Joel two and twenty-eight,
"In that day I'll pour my spirit,
Upon those who'll watch and wait."

This Holy Ghost fire is still falling,
On those who will come and pay the
price;
This latter rain of the Holy Spirit,
A reward for your sacrifice.

Come pay the price, let Jesus fill you,
Get baptized with the Holy Ghost,
Lay down self with all it's burdens,
He'll fill you to the uttermost.

—Floyd McWhinney.

SECOND YEAR BIBLE



FIRST ROW (Left to Right)

- RAY SHULZ**
President
Out Station
Phil. 4:19
Hereford, Texas
- ISABELLE WELLER**
Vice-President
Student Teacher
John 15:16
Hagerstown, Maryland
- JOSEPH GUTEL**
Sec.-Treas.
Student Teacher
Missionary Prayer Band
I Cor. 10:13
Storm Lake, Iowa
- MRS. MINNIE LOWERY**
Missionary Prayer Band
Psa. 119:11
Dallas, Texas
- VERNON WILSON**
Rev. 3:11
Washington, D. C.

SECOND ROW

- LOUISE WILLIS**
Out Station
Psa. 84:11
San Antonio, Texas
- DONALD WOOD**
Boy's Quartet
Orchestra
Psa. 91:11
East St. Louis, Ill.
- EILEEN GARRETT**
Missionary Prayer Band
John 15:7
De Leon, Texas
- AUDIA BRAZIL**
Pastor—Jay Bird
Orchestra
Rev. 22:14
Quanah, Texas
- ONIE MARIE STEWART**
Girl's Trio
Missionary Prayer Band
Isa. 41:10
Fort Worth, Texas
- RUTH MARTIN**
Missionary Prayer Band
Isa. 41:10
Breckenridge, Texas

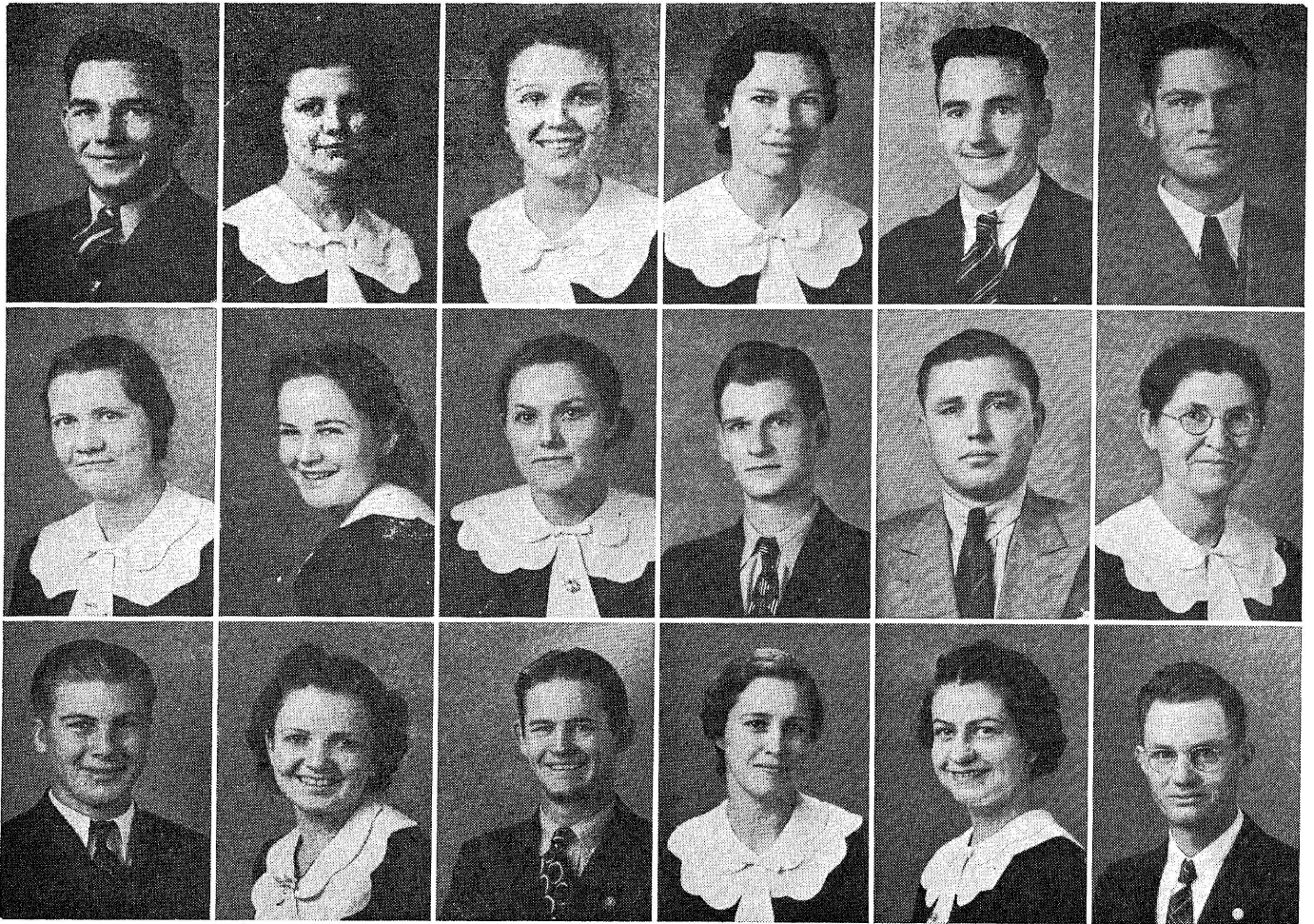
THIRD ROW

- RUBY NELL SIMMONS**
Missionary Prayer Band
Rom. 8:28
Winter Garden, Fla.
- QUENTIN SHORTES**
Missionary Prayer Band
Rom. 8:28
Ackerley, Texas
- E. BLANCHE BARBER**
Missionary Prayer Band
Phil. 4:19
Breckenridge, Texas
- CLAUDE RISSOGNAL**
Pastor—Aledo
Orchestra
Seattle, Washington
- ESTON PACK**
String Band
Missionary Prayer Band
Mark 11:24
Roswell, New Mexico
- JACK SINGLETON**
Class Poet
Joshua 1:9
Fort Worth, Texas

FOURTH ROW

- HERSCHAL HOBBS**
String Band
Orchestra
Matt. 18:11
Austin, Texas
- JAMES ROPER**
Orchestra
John 3:27
El Paso, Texas
- VERNON McCUTCHEEN**
Missionary Prayer Band
Rev. 2:10
Austin, Texas
- HERMAN SHIELDS**
Out Station Pastor
Mark 11:24
Jacksboro, Texas
- CLAUD DAVIS**
Orchestra
Matt. 11:28
Lawton, Oklahoma
- CRYSTAL DEASON**
Missionary Prayer Band
I Pet. 3:18
Canadian, Texas

FIRST YEAR BIBLE



FIRST ROW (Left to Right)

A. J. SHIELDS
President
Out Station
 John 8:31,32
 Stonewall, Oklahoma

IRENE BATES
Secretary-Treasurer
Out Station
Missionary Prayer Band
 Job. 23:10
 Amarillo, Texas

HELEN ANDERSON
Vice-President
Out Station
 Psa. 37:4
 Laurel, Mississippi

MRS. DORIS PARKER
Missionary Prayer Band
 Heb. 13:5
 Fort Worth, Texas

GILBERT ANDERSON
Missionary Prayer Band
 James 1:22
 Cozad, Nebraska

HOWARD MCCLENDON
Out Station
Missionary Prayer Band
 Isa. 53:6
 Perrin, Texas

SECOND ROW

MRS. MATTIE CAIN
Missionary Prayer Band
 Psa. 46:1
 Dallas, Texas

BETTY AKINS
Missionary Prayer Band
 Rom. 8:28
 Fort Worth, Texas

EDNA YOUNG
 Rev. 2:10
 Fort Worth, Texas

SAM DRYSDALE
 I Cor. 13:13
 Fort Worth, Texas

PRESTON CHANEY
Out Station
Missionary Prayer Band
 Rom. 8:38
 Breckenridge, Texas

MRS. LILLIAN SLUSSER
Missionary Prayer Band
Street Service
 Isa. 53:5
 El Paso, Texas

THIRD ROW

ERNEST FLOWERS
 II Peter 3:9
 Boyd, Texas

AUDRA NASH
Orchestra
Out Station
Missionary Prayer Band
 Isa. 53:6
 LaSara, Texas

FLOYD HARRIS
 Psa. 1:17
 Fort Worth, Texas

THELMA COFFEE
Out Station
 Psa. 91:1
 Russellville, Ark.

NAOMI SEARS
Missionary Prayer Band
 Prov. 3:5,6
 Fort Worth, Texas

HUGH HICKS
Out Station
Missionary Prayer Band
 Psa. 43:1
 Brownfield, Texas

FIRST YEAR BIBLE



FIRST ROW (Left to Right)

SECOND ROW

THIRD ROW

MARY JO LILY
Out Station
Psa. 27:1
Mineola, Texas

DOROTHY JOHNSON
Rom. 8:28
Pleasant Glade, Texas

MYRTLE ROBERTS
Missionary Prayer Band
John 3:15
Grapevine, Texas

ROBERTA BROWN
Psa. 23:1
Edinburg, Texas

NINA TOWNSEND
Prov. 3:5,6
Pilot Point, Texas

MARY E. STRAHAN
Psa. 37:23
Fort Worth, Texas

JUANITA SCOTT
Missionary Prayer Band
Rom. 8:35
Pleasant Glade, Texas

HENRIETTA SAUER
II Tim. 2:15
St. Louis, Mo.

AGNES ROBERTS
Matt. 7:7
St. Louis, Mo.

MABLE MEEKS
Class Reporter
Missionary Prayer Band
Rom. 8:28
El Dorado, Arkansas

MRS. CARRIE WOOLSEY
Missionary Prayer Band
Missionary to China
St. John 3:30
Pocahontas, Illinois

IRENE MAROON
Missionary Prayer Band
I Pet. 5:7
Pocahontas, Illinois

MELBA SHULZ
Out Station
Missionary Prayer Band
Psa. 1:1-6
Hereford, Texas

THAYA HUNTER
Missionary Prayer Band
Evangelist
Phil. 4:13
Fort Worth, Texas

JOHNNY PAYNE
Missionary Prayer Band
John 4:35
Fort Worth, Texas

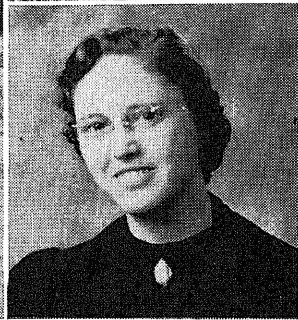
THOMAS BROCK
Out Station
Missionary Prayer Band
Matt. 6:33
Colorado Springs, Colo.

DOLLIE SHORT
Evangelist
Missionary Prayer Band
Col. 3:23
Miami, Fla.



MISSIONARY DEPARTMENT

SHIELD OF FAITH MISSIONARIES
Mr. and Mrs. Homer Goodwin, Yendi, Africa



Thelma, Homer and Baby Sidney

Goodwin home while building Out-Station in Bawku.

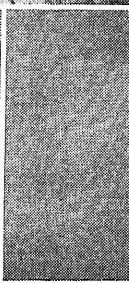
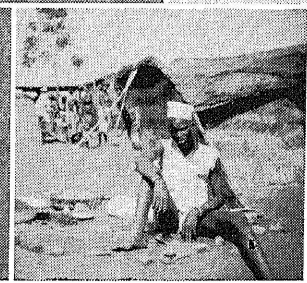
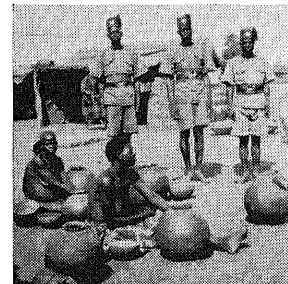
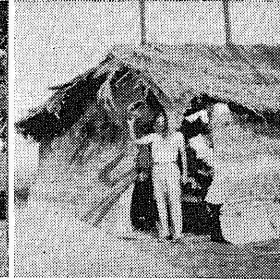
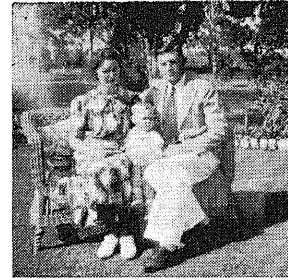
A rag man.

Two Dagomba Chiefs on horses.

Women selling native beer.

A Hunter, note the flint lock gun.

A market scene among Kusasi people.



TOP—Missionary Group-Leaders.
CENTER—Musical Directors.
TOP CENTER—Mrs. W. B. McCafferty
Missionary Sponsor.
LOWER CENTER—Mrs. Joe Pierson
Asst. Missionary Sponsor.
BOTTOM—S. O. F. Missionary Band.

HEROES

MRS. W. B. McCAFFERTY

A hero is not necessarily one who is a glaring success, but according to Webster, a person of distinguished valor or fortitude. There have been from the beginning of time, persons with fortitude.

Some are: Noah—building the ark; Jacob—wrestling with God; Joseph—while in Egypt; Moses—interceding for Israel; Hannah

—in her vow to God; Jonathan—with David through many vicissitudes of life; Esther in defence of her people; David in his confession of sin; Jesus—in his purpose of life; Peter—in his Pentecostal message; Paul—in keeping the faith and John on the Isle of Patmos.

History is quite limited for the next few years. Others who were heroic are: Polycarp—who confessed Christ in the arena; Augustine—who fought the battle in the garden; Benard—whose courage was mightier than the warrior's sword; John Wiclif—the father of the Bible; John Huss who put his conscience above his life; Martin Luther—the father of the Reformation; John Calvin—a timid man who transformed a city;

John Wesley—who took Christ to the people; William A. Shedd—who converted North American Indians; Pandita Ramabai—who had conferred upon her the highest title possible for a native woman of India, and David Livingston—who penetrated the heart of Africa.

These all died in the faith; looking forward to the "Great getting up morning". They suffered, they bled, they died. The *Truth* marched on—on to you—to me. What shall we do? Will the *Truth* die? Will it live? Will it move? Will it's banner be lifted HIGH until He, the King of kings, and Lord of Lords, shall say for the last time, "It is finished?"

Our offerings are the largest ever. Let us continue to move forward.

HIGH SCHOOL DEPARTMENT

CHRISTIAN EDUCATION

“ . . . And Jesus increased in wisdom and stature, and in favor with God and man.” (Luke 2:52).

There are many theories and definitions of education. The Bible defines education clearly as a “fourfold development” and constant growth therein as in the young life of Jesus who, (1) “increased in wisdom”; (2) increased in “stature”; (3) increased “in favor with God”; and (4) increased in favor with “man”.

The Shield of Faith High School is doing a great work for God in sending out its high school graduates developed fuorfold: First, with a secondary education—“wisdom”; Second, well developed physical bodies—“stature”; Third, with a personal knowledge of God and an understanding of His Word—“favor with God”; Fourth, capable of meeting the world and making friends—“favor with man”.

Any parent becomes greatly alarmed should their child begin to lose any of its physical senses of hearing, sight, taste, or smell, whcih go to make a normal man or woman. Parents should be as concerned that their high school boy or girl be educated the same as Jesus was—fourfold: which is Christian Education.

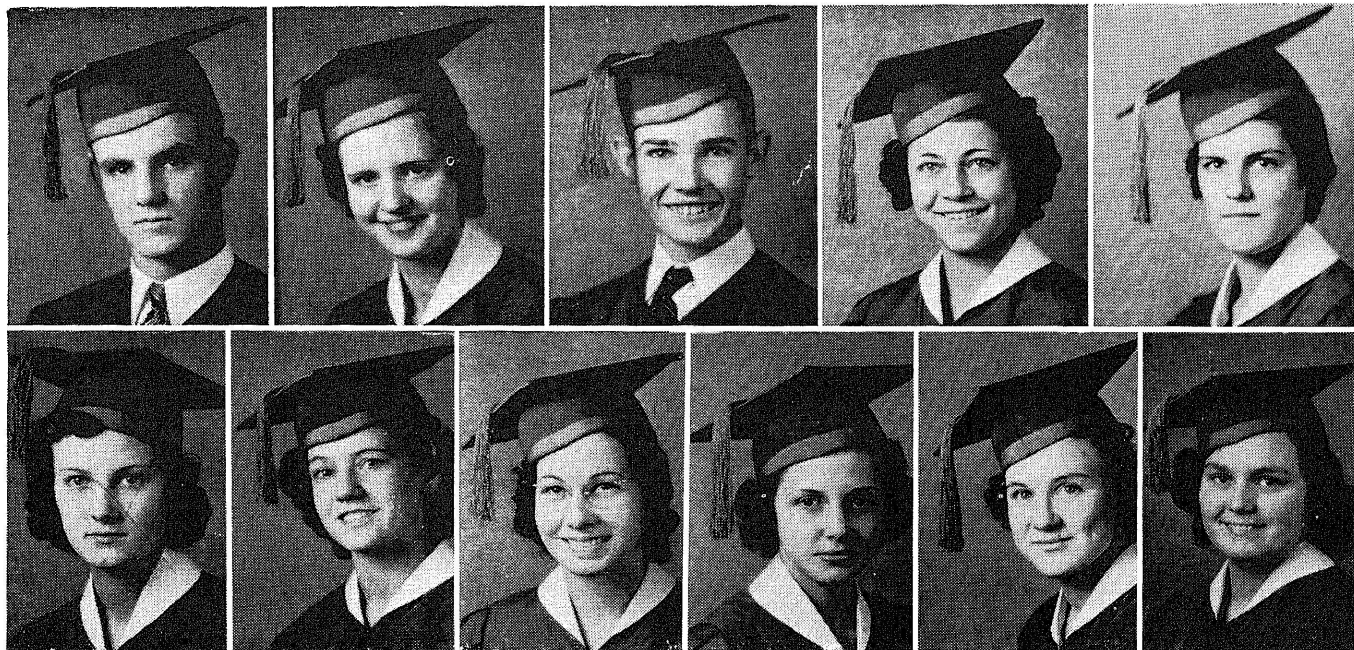


E. W. MOORE

E. W. MOORE.

CLASS MOTTO: "Prayer Changes Things"

HIGH SCHOOL SENIORS



FIRST ROW (Left to Right)

EMMITT FULLERTON
President
Out Station
String Band
I. Cor. 15:19
Sural, Oklahoma

ELIZABETH ANDERSON
Secretary
Librarian
Orchestra
Out Station
Psa. 37:4
Biloxi, Miss.

BILLY McQUEEN
Vice President
Ass't. Librarian
Psa. 32:7,8
Pecas, Texas

JUANITA CROPP
Ass't. Secretary
Girls' Chorus
Gospel Quartet
Prov. 3:5,6
Fort Worth, Texas

STELLA PIERSON
Class Reporter
Missionary Prayer Band
John 10:4
Abernathy, Texas

SECOND ROW

ELLEN FOLLEY
John 3:16
Montclair, New Jersey

IRENE SHARP
I John 3:1
Graham, Texas

GETHROL JORDAN
Girls' Quartet
Psa. 91:1
Fort Worth, Texas

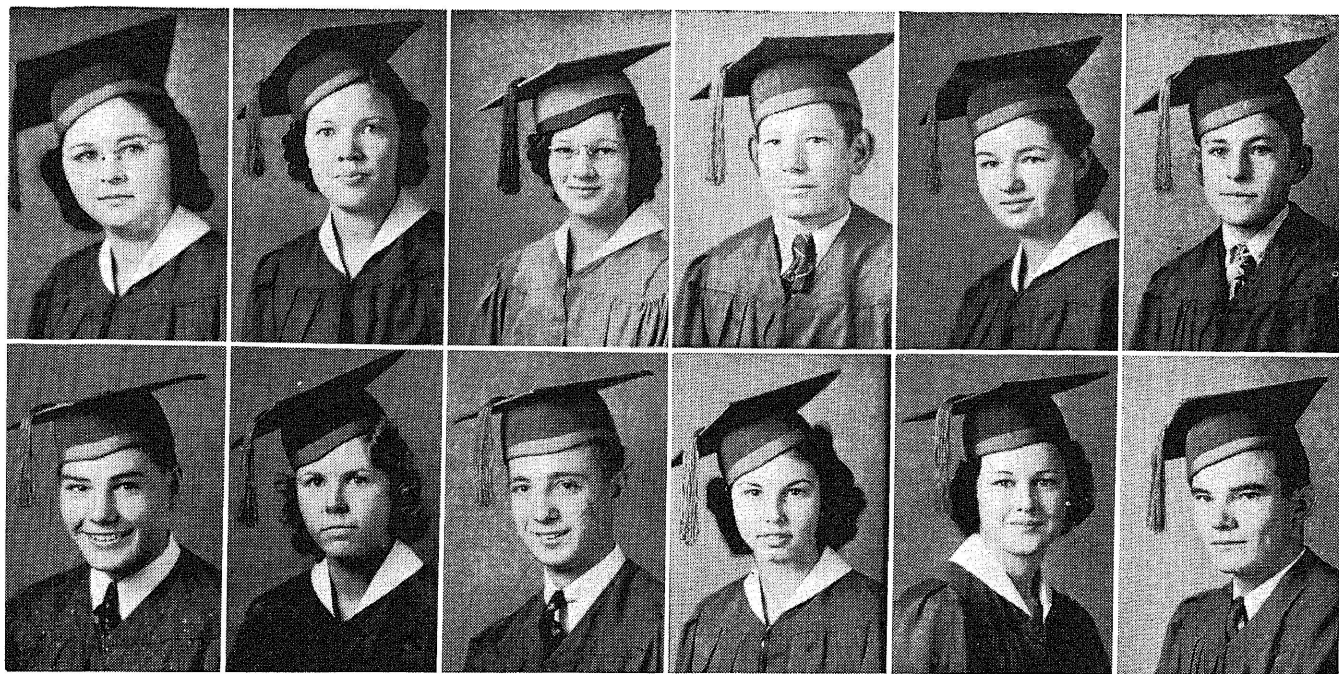
WINNIE SCHINDLER
Out Station
II Tim. 2:15
Miami, Fla.

HELEN CAIN
Girls' Quartet
Missionary Prayer Band
Mark 11:24
Dallas, Texas

EDITH SMITH
II Tim. 2:15
Gran Quivera, N. Mex.

"In all thy ways acknowledge Him, and He shall direct thy paths. Be not wise in thine own eyes; fear the Lord, and depart from evil." (Prov. 3:6,7).

HIGH SCHOOL SENIORS



FIRST ROW (Left to Right)

MILDRED DERBY
Prov. 3:6
Denver, Colo.

ROSA LEE TEAGUE
Psa. 1:1
Frisco, Texas

VIRGINIA FREELAND
Out Station
Gospel Quartet
Girls' Chorus
Jno. 3:16
Fort Worth, Texas

CHARLES BANKHEAD
Psa. 27:1
Fort Worth, Texas

DOROTHY KEYS
Orchestra
Psa. 68:19
Fort Worth, Texas

WILLIAM CROPP
Orchestra
Luke 11:9,10
Fort Worth, Texas

SECOND ROW

ROBERT HUMPHREY
Orchestra
Psa. 138:7
Russelville, Arkansas

ESTHER PAYNE
Out Station
Col. 2:6
Texas City, Texas

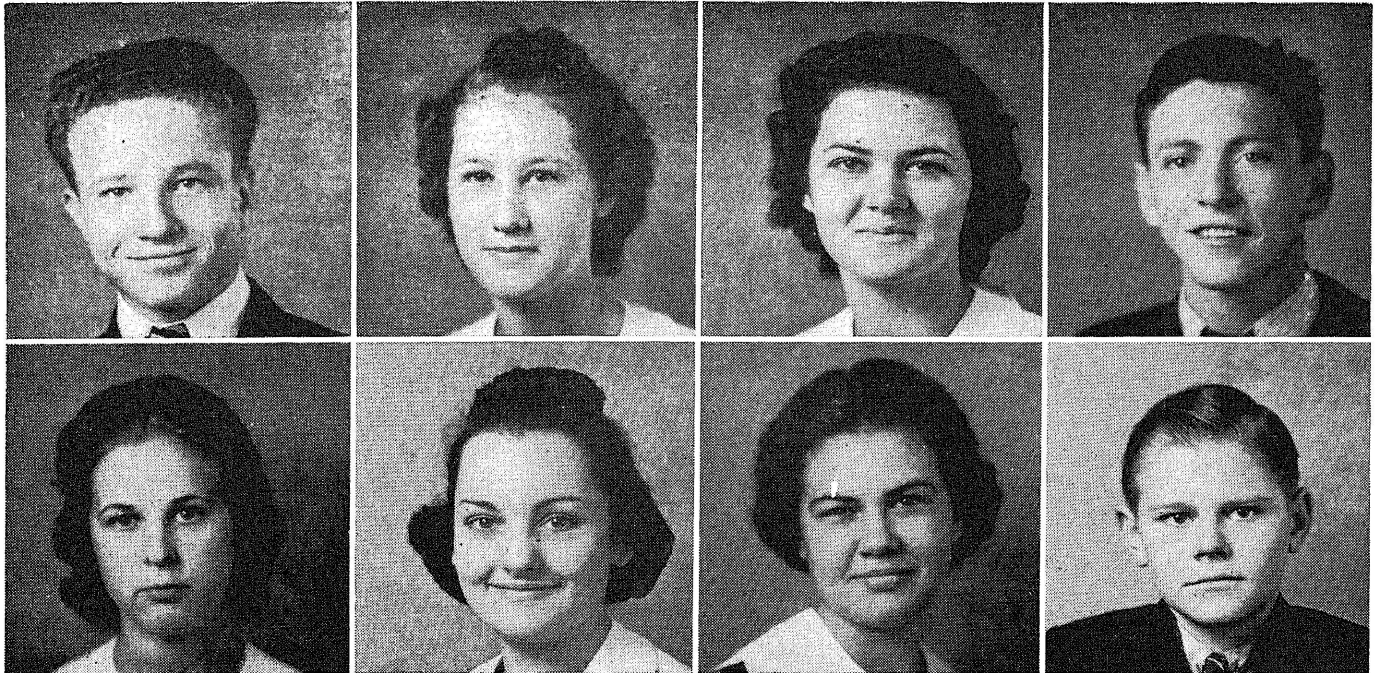
MELVIN SMITH
Psa. 1:1,2
Houston, Texas

DORIS GREEN
Girls' Quartet
John 15:7
Fort Worth, Texas

THETA HARRISON
Girls' Quartet
John 15:16
Fort Worth, Texas

CHARLENE ROBERSON
Orchestra
Psa. 62:8
Fort Worth, Texas

JUNIORS



FIRST ROW (Left to Right)

DONALD NEWMAN
President
Orchestra
Out Station
 Heb. 11:6
 Daytona Beach, Fla.

LOUISE AUTREY
Secretary
Out Station
 Prov. 3:5,6
 Fort Worth, Texas

ALVARINE WILLIS
Vice President
Out Station
 I Peter 5:7
 Alvord, Texas

DANIEL SAVELL
 I Tim. 6:6
 Columbus, Georgia

SECOND ROW

MARY BINGHAM
Class Reporter
 Psa. 23:1
 Orange, New Jersey

DOROTHY KELLY
 I Cor. 13:13
 Dallas, Texas

PHEBIE JOHNS
Missionary Prayer Band
Street Services
 Phil. 4:19
 Tallahassee, Fla.

BILLIE PARKER
Out Station
 Eph. 6:16
 Laurel, Miss.

IF

If you will preach the good old Bible,
 And preach it straight, just like it's written
 down,
 If you will trust it's author, when others doubt
 him,
 And put him to the test, to prove his word is
 sound,
 If you'll preach the word, from start to finish,
 And not mix in a lot of other stuff,
 But give the people—just plain Bible.
 When others seem to think it's not enough.

If you will live the good old Bible,
 And say "Amen" to that, that's meant for you,
 If you will trust the wisdom of its author,
 And do what he says is best to do,
 E'n tho sometimes, it hurts your feelings,
 And takes the bark right off your pride,
 If you'll go right on and live the Bible,
 E'vn tho it brings the bitter tears to your eyes.

If you will talk the good old Bible,
 When other people talk, of old age pension-plans,
 If you will talk of Christ, his Blood and Heaven,
 And the wonders of the Glory Land,
 If you will keep your eyes on things eternal,
 While others seek for passing wealth and fame;
 If you will always speak a word for Jesus,
 While others thrill at great dictators names.

Yes, if you'll preach and live and talk the Bible,
 And keep your eyes on things above,
 If you will close your ears to earthly voices
 calling,
 And listen for the still small voice of love,
 If you will give to Jesus, from each minute,
 Sixty seconds worth of holy life;
 Yours is Heaven and all that's in it.
 And what's more—You'll sit at Jesus' side.

—Floyd McWhinney.



1. Mary Jo and Phebie.
 2. Carlsbad Caverns bound.
 3. Our teachers.
 4. Leivie and Donald.
 5. The girls exercise at the campus lake.
 6. S. O. F. in Mississippi.
 7. S. O. F. male quartet and Mr. Arnold.
 8. No eats without this crew.
 9. The fire escape.

10. Melba Schultz.
 11. The laundry crew.
 12. Donald Wood acting his age.
 13. E. W. Moore, Jr.
 14. Mary Jo is a bashful girl, Leavie.
 15. A group of S. O. F. boys.
 16. Alva on his steed with a lariat.
 17. The "long" and "short" of Shield of Faith.
 18. Rev. Thomas Sutton, Jr.

LINGERING ECHOES

"Be thou faithful unto death, and I will give thee a crown of life." Rev. 2:10—Brother Shields
 "Well, now, let's just hold steady."—Brother Collins.

"Absent without permission!"—Brother McCafferty

"Alright, students, let's get to our classes now."—Brother Moore

"Heavenly days!"—Sister McCafferty

"Lights out, boys."—Brother Zook

"I can't excuse you. You are behind with your bookkeeping now."—Sister Slaton

"Good morning, _____."—Brother Jones

"Why weren't you in study hall."—Sister Wilson

"Let's get quiet please."—Brother Gutel

"Now, I mean get quiet."—Sister Weller

"Remember, today is the day for your lesson."—Mr. Arnold

"I just can't find a place for all of them to practice."—Sister Flory

"Now, I am going to eliminate you on grounds of whether or not you are quiet."—Brother Miles

"We just ain't a livin' right."—Brother Fullerton

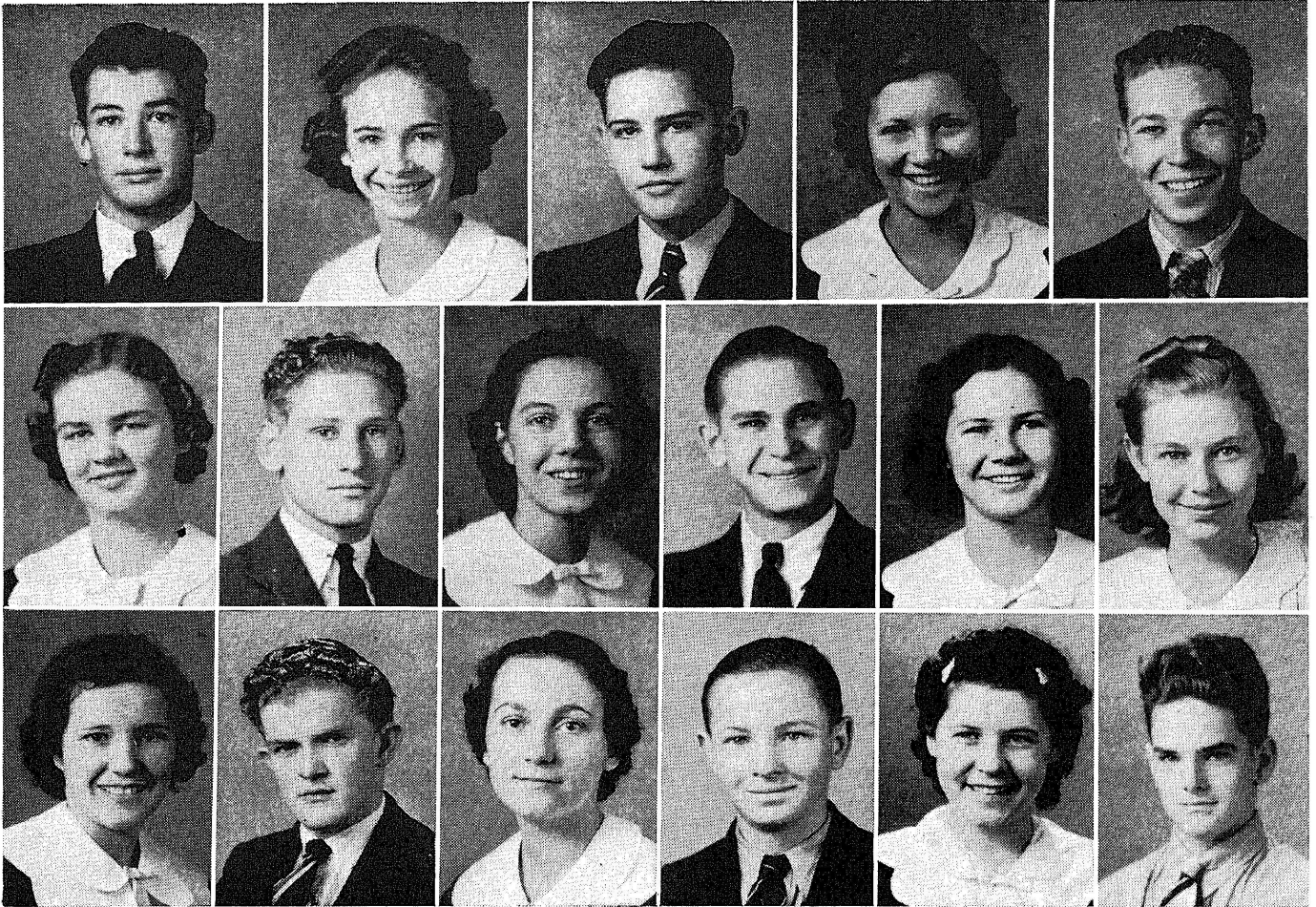
"No, you can't come in the office during classes."—Sister Wise

"If you want your mail, you'd better get quiet."—Sister Fullerton

"You boys pick plenty of beans!"—Sister Flowers

"Oh, dear!"—Miss Martindale

SOPHOMORES



FIRST ROW (Left to Right)

JAMES FLOWER
Class President
Prov. 18:24
Daisetta, Texas

MYRTICE RHODES
Sec.-Treas.
John 3:16
Miami, Florida

RAYMOND TAYLOR
Vice-President
Prov. 18:15
Houston, Texas

ALICE REYNOLDS
Ass't. Sec.-Treas.
John 3:16
Fort Worth, Texas

BRUCE BALLARD
Class Reporter
Matt. 5:8
Colorado Springs, Colo.

SECOND ROW

BONNIE BURKE
Prov. 18:15
Fort Worth, Texas

WAYNE PITTS
Out Station
Matt. 4:19
Littlefield, Texas

NANCY WILDMAN
Psa. 27:1
Detroit, Michigan

CARL KIPP
Prov. 15:33
Gardner, Florida

HAZEL HARRISON
Matt. 6:33
Daisetta, Texas

VERNA MAE PRUITT
Matt. 5:7
Fort Worth, Texas

THIRD ROW

EVA LEE WILLIS
Girls' Chorus
John 3:16
Fort Worth, Texas

HAROLD SMITH
Prov. 19:4
Winsboro, Texas

ANNETTA O'CONNER
Out Station
Psa. 2:8
Loveland, Colo.

WALLACE McKINNEY
Missionary Prayer Band
Psa. 1:1
Fort Worth, Texas

MARIE NORTHCUTT
John 3:16
Ada, Oklahoma

EUGENE ARES
Matt. 7:12
Las Cruces, N. Mex.



SOPHOMORES

FIRST ROW (Left to Right)

MATTIE LOU YOUNG
Matt. 7:7
Fort Worth, Texas

FRANK HAYES
John 3:16
Houston, Texas

VIRGINIA ALLEN
Jer. 33:3
Cleburne, Texas

CALVIN KING
Rom. 8:28
Fort Worth, Texas

DOROTHY NETZER
Out Station
Matt. 11:28
Ft. Collins, Colo.

PHILLIS JORDAN
Girls' Quartet
Job 19:25
Fort Worth, Texas

SECOND ROW

RAY CARROLL
Matt. 7:7
Baytown, Texas

MARJORIE WATTS
Phil. 4:19
Austin, Texas

MELVIN TREMAINE
Orchestra
John 3:16
Lawton, Oklahoma

MINNIE ELSNER
Jer. 33:3
San Antonio, Texas

BEULAH POWELL
Out Station
Girls' Chorus
Prov. 15:7
Fort Worth, Texas

AUDELL DAULTON
Psa. 37:3
Childress, Texas

THIRD ROW

ROBERTA LANIER
John 3:16
Fort Worth, Texas

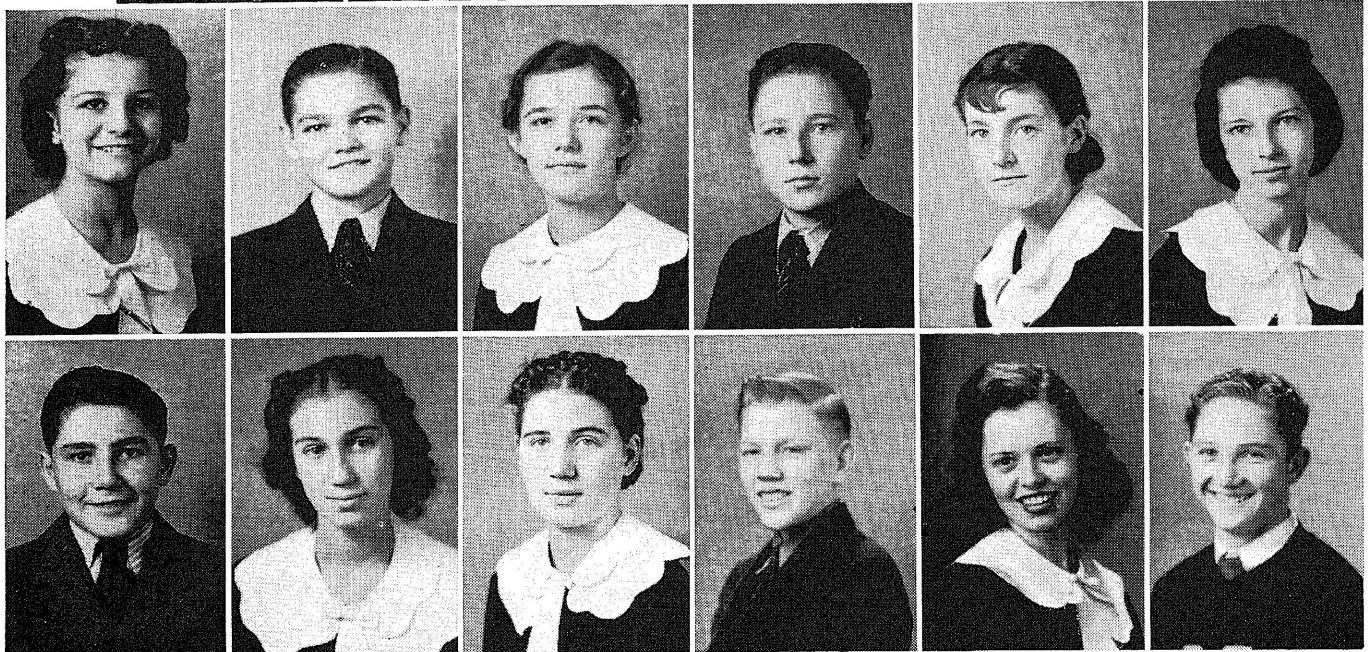
CHARLES COLLINS
Orchestra
Missionary Prayer Band
Psa. 1:1
Fort Worth, Texas

ADDIE LEE TEMPLIN
Orchestra
John 3:16
Fort Worth, Texas

JONNIE JOHNSON
Orchestra
John 3:16
Hollywood, Fla.

HELEN WARREN
Girls' Chorus
Out Station
Missionary Prayer Band
Psa. 27:4
Fort Worth, Texas

TULA GILLIS
Prov. 19:17
Bartow, Fla.



FRESHMAN HIGH SCHOOL

FIRST ROW (Left to Right)

ERNEST SCHINDLER
President
Psa. 1:1
Miami, Fla.

DORIS SWAN
Secretary
Missionary Prayer Band
Psa. 21:22
Washington, D. C.

JOE PAT HAYES
Prov. 3:10
Miami, Fla.

EULMA L. CUNNINGHAM
Class Reporter
James 1:5
Karnes City, Texas

JACK TRAVIS
John 3:16
Ripley, Tenn.

SECOND ROW

MARJORIE CAYWOOD
Psa. 103:3
Houston, Texas

TRUBY MARTIN
Out Station
Rom. 8:39
Mulberry, Fla.

ESTELENE FILBERT
Out Station
Psa. 23:1
Donna, Texas

EMMIT KING
Psa. 40:31
Fort Worth, Texas

MARCELLA BRIM
Out Station
Isa. 53:5,6
Fort Collins, Colo.

DOROTHY LEE GREEN
Girls' Chrous
Rom. 1:16
Fort Worth, Texas

THIRD ROW

MITCHELL CHESSON
Missionary Prayer Band
Psa. 23:1
Orangefield, Texas

ETHEL SPENCER
Out Station
Isa. 53:5,6
Daisetta, Texas

STAVANNA JOHNSON
Heb. 12:1
Houston, Texas

PAUL COLLINS
Psa. 1:1
Fort Worth, Texas

LOIS GREY
Rom. 8:1
Houston, Texas

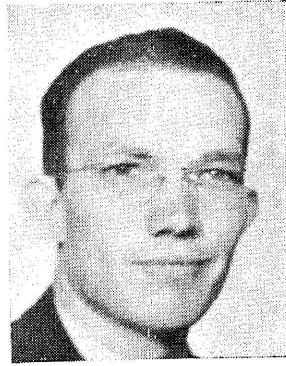
ADNE WRIGHT
Matt. 7:7
McCamey, Texas

Music Department



I love and appreciate music because it is beautiful to the ear and can stir the soul as nothing else can. I teach it because I like to see the wonderful results that it brings forth in young lives who use their talents for the Lord.

—Mrs. Flory



Music is the arrangement of melodious sounds produced by the human voice and a variety of mechanical devices. Music has been known to be a great stimulant in the lives of many weary souls in the various courses in life. I teach music because I love it, and want to do my best to help others learn of this wonderful art.

—Harold S. Miles.

Music is the universal language. It is an expression of the inner man. It may express sorrow, grief, joy, gladness, strength, weakness or hope.



I find in music, not only a series of pleasing sounds, but also a force that can change the destiny of our lives. May it ever be used for God's glory. I teach it only at the Lord's command and for His work.

—I. L. Fullerton



I appreciate music because I feel I can express my thoughts with more understanding. I teach it because of the joy I get in its environment.

—Robert S. Arnold



SHIELD OF FAITH MUSIC STUDENTS

SHIELD OF FAITH ALUMNI

SAM E. ELDRIDGE, President
THOMAS SUTTON, Vice-President

BIBLE SCHOOL

1933
Bill McCann
Mrs. De Merchant
Mrs. Helen Mann
Mrs. Roy Allison
Mrs. Stagga

1934
Mrs. Evelyn Thornton
Vera Jean Boyd
Mrs. Winnie Wood
Mrs. R. L. Miesse
Creston Shields
Kenneth Baker
Mrs. Clyde Bair
Vera Shields
Mrs. Joe Pierson
Lorraine Wise

1935
Elmer Heine
Lester Summers
Omer Brown
H. T. Goodwin

Mrs. H. T. Goodwin
Wallace Clark
Mrs. Eithel Browning
Mrs. Edna Spence
Beth Miesse

1936
A. N. Fleming
S. E. Eldridge
Mrs. Clyde C. Goree
Otis Runyon
Mrs. Otis Runyon
Clarence Reding
Eula Mae Walker
Mrs. Loes Flowers
Jerry Sloan
Mrs. R. C. Crews
Grover M. Langston
Leon Underhill

1937
Mrs. Hardin
Carrie Thompson
Hugh Kesler

1938
Gladys Altman
Dorothy Carpenter
Woodrow Dikes
Ruth Ford
Pearl Foster
I. L. Fullerton
Mrs. I. L. Fullerton
Leonard Harshaw
Gervis Hay
Thelma Huskey
Wilma Hunter
Beulah Ruth Johnson
Ellen Ruth Maddux
Ellis McCutchen
Mrs. Melita Pickett
Opal Shelburn
Carolyn Shell
Inez Shields
Thomas Sutton
Ruth Sutton

HIGH SCHOOL

1934
Blanche Huser
Viola Vogal
1935
Virgil Gann
Dean Smith
Randall Poling
Evelyne Franks
Sylvia Alison
Denzal Teague
Martha Lee King

1936
Hilda Wendt
Melba Carnes
Victor Smith
Cecil Sauls
Norman Wise
Elvis Davis
Gordon Lee Flowers
Mrs. Victor Smith
Alta Wendt
Amy Schoonover
Sallie Mae Thorne
Mary Alice Garver
Mary Nell Porter
Mrs. Elvis Davis
Pauline Van Kleeck

1937
Rubye Adkins
Doris Baldrige
Mary Jo Barnett
Claude Davis
Fredna Clack
Peggy Daniels
Mrs. Paul Broyles
Pearl Foster
Charles Hay
Wilma Hunter
Homer Chokas
Lillian Jones
Jake Master
Jesse Owens
Cecil Parrish
Joe Pierson
Doris Richards
Eula Smith
Esther Schaffer
Mark Spilman
J. D. VanHouse
Mrs. Bessie Langston
Dorothy Carpenter
Mary Elizabeth Watson
Clarence Reding
Vernon Smith

1938
Kathryn Bankhead
Dorothy Faye Braune
Stewart Cleveland
Mildred Dorety
Lee Dunlap
Tom Egerton
Naomi Gordon
Cecil Gruver
Carol Hassemeyer
Dorothy Hughes
Clarice Jones
Jewel Kimbell
Audrey Maddux
James Moore
Bessie Mae Newman
Eston Pack
Jack Singleton
Clifford Sutton
Fern Thomas
James Watson
Vernon Wilson
Donald Wood

BOULEVARD ASSEMBLY OF GOD

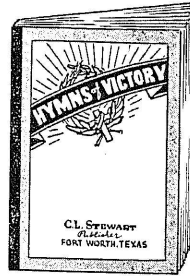
14th and Boulevard Streets

Rev. C. L. STEWART, Pastor and Gospel Song Book Publisher



REV. C. L. STEWART

ORDER YOUR
GOSPEL SONG BOOKS
FROM C. L. STEWART



Our 1939 Book, "Hymns of Praise", will soon be off the Press.



MRS. C. L. STEWART

ROSEN HEIGHTS ASSEMBLY OF GOD

Rev. O. B. BRAUNE, Pastor

2700 Azle Avenue

BOARD OF DEACONS

T. L. INGRAM ALBERT GREEN
T. O. HARWOOD W. C. CROPP



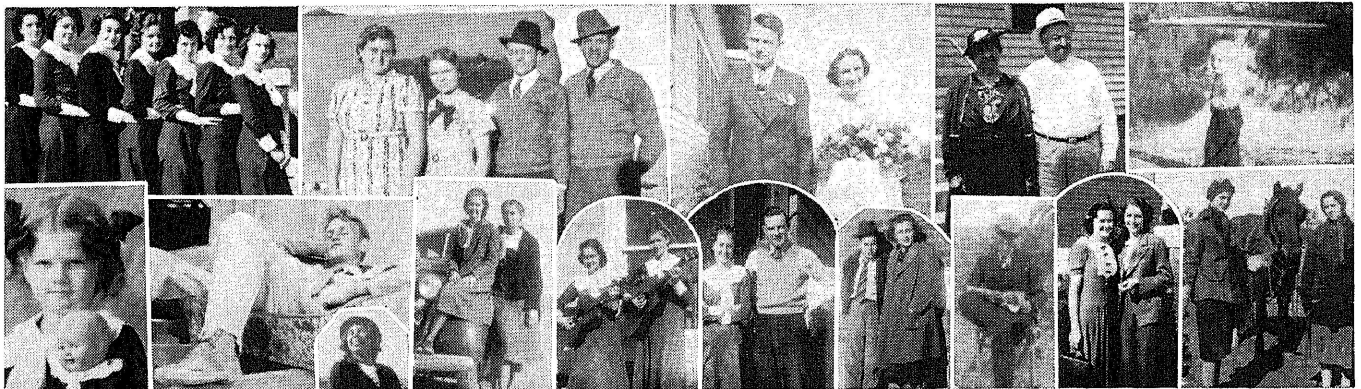
REV. O. B. BRAUNE

Sunday School Supt.—ALBERT GREEN
Asst. Sun. School Supt.—B. B. FREELAND
Church Clerk —NOBLE WILDER
Sec.-Treas. Bldg. Fund—WM. F. SHIPP
Church Secretary—C. W. SEARS
Sunday School Sec.—MRS. N. T. WILDER
Asst. Sun. S. Sec.—MRS. VERA WILSON
Christ's Ambassadors Pres.—RALPH SWALLOW
Choirister—REV. HAROLD MILES



MRS. O. B. BRAUNE

A Church With A WELCOME,
A Church With the Old Time Power



HERE AND THERE—Life savers from New Mexico; Wedding Bells for Eula and Weldon; Elizabeth and Juanita; Mary Francis Hanners; Howard Day asleep; "Look at Bonnie"; Addie Lee and "Dot"; Brother Fullerton and his "Funnies"; "Giggles", Fredna and Esther); "Going Hunting."

SHANNON'S

Funeral Home

2217 Ave. B.
5-2191

Funeral Chapel

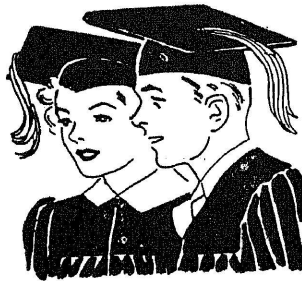
1301 North Main
6-2191

Emergency Ambulances and Invalid Coaches
Maintained at these Convenient
Locations.

OLIVER SHANNON
Vice President and General Manager

MARVIN SHANNON
Secretary and Treasurer

DAVE SHANNON
President



Compliments
of

**TAYLOR'S
STUDIO**

PHOTOGRAPHS . . .
THAT LIVE FOREVER!

Fort Worth, Texas

402 Burk Burnett Bldg. Dial 2-7104

Congratulations to the Senior Classes

Byas Gresham Drug Store

Fred Bradshaw at Safeway

Foy Babbs Barber Shop

Cohn and Sons

Stout's Cafe

Ross Shoe Shop

Lampton's Grocery & Market

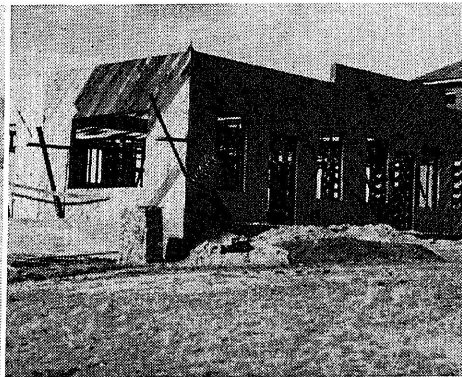
Mrs. Howard's Art Shoppe

Lone Star Candy Co.

Jess Stokes Shoe Shop



Boys boating in the S.O.F. Lake.



This is the house your dimes built.



The girls have their time for boating.

SHADY TOUR-REST

Deluxe Apartments, fireproof, insulated construction
 Bath - Showers - Ceiling Fans
 Sparkling, pure Artesian Water
 Garages with overhead doors.

Reasonable Rates and Excellent Service

JEWELL HARRISON
 Owner and Manager

4036 E. Belknap St. - Fort Worth, Texas - Phone 2-0481

On U. S. Highway No. 377

State Highways No. 10 and 121

Chickasaw Lumber Co.

Better Building Material
 at Lower Prices
 "Goteverything"
 Four Convenient Yards

Dip Cafe

2401 Azle Ave.
 The best 5c Hamburgers
 Hot Dogs and Sandwiches
 Open till Midnight

WE ARE PROUD OF THE PART WE PLAYED IN
 THE PRODUCTION OF THIS ANNUAL AND
 EXTEND BEST WISHES TO THE GRADUATES
MANNEY PRINTING COMPANY
 PRINTERS—PUBLISHERS
 PHONE 2-2552 717 N. SYLVANIA

Compliments

Hill's Grocery

Where North Fort Worth Saves

Compliments

Lewis Furniture Co.

PHONE 6-3771
 2351-55 N. Main Ft. Worth, Texas

Compliments

W. T. Grant Co.

PHONE 2-4274
 613-15 Houston St. Ft. Worth, Texas

Miller's Studio

Portrait Work and Kodak Finishing
 2363 N. Main St. Fort Worth, Tex.



INSERT—Hugh Kesler Jr. We hope Jr. will some day be able to play like his daddy.

READING FROM LEFT TO RIGHT: TOP ROW:

Violin students and Brother Fullerton. String Band.

Brother Miles Donald, Irene, Calvin, Billy.

BOTTOM ROW:

Orchestra group.

Voice students and Robert S. Arnold.

Brother Fullerton's students.

ALL MUSIC NEEDS

Promptly and Satisfactorily Filled
at Our Store

Instruments—New and Used
Music—All Classifications
Accessories . . . Expert Repairing

Let Us Serve You in Person
or by Mail

Ault Music Co.

609 Throckmorton Ft. Worth, Tex.

Compliments of

E. R. Johnson Lumber Co.

2115 North Main Phone 6-2135

EYE SIGHT SPECIALISTS

Reasonable Prices--Neighborly Credit

Dr. McGuire and Staff

Phone 2-5323 209 W. Second St.
Shurfit Optical Co.

Ellis Pecan Co.

1005 Jones Street Phone 3-2655
Fort Worth, Texas

Compliments of

Board's Drug Store

2724 Azle

We Deliver Phone 6-1166

Motor Investment Co.

1313 Commerce Street 2-5311

P. S. CARNES Fort Worth, Texas



E. C. KING

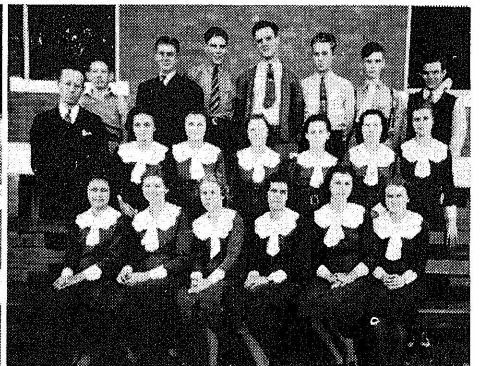
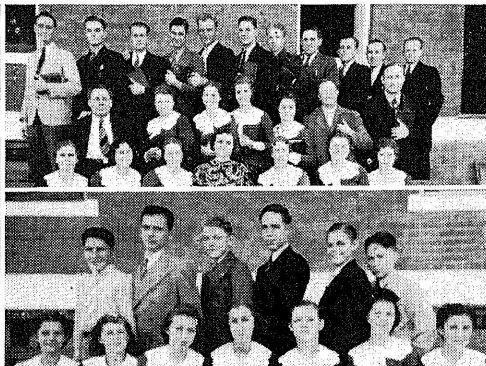
PLUMBING CONTRACTOR

See the Table-Top Water Heater
A marvel in beauty and efficiency.
Now on display at our show rooms.

TERMS OR CASH

A SUBSTANTIAL ALLOWANCE
ON YOUR OLD HEATER

407 West Central Phone 6-2340



High School Junior Class.

(Top) Senior Bible Class

(Bottom) Freshman H. S.

Senior High School Class and
class sponsor, E. W. Moore

**33 Fruitful Years
in TODAY'S TEMPO!!**

Serving . . .
Fruits and Vegetables
to the
Independent Grocers
of the SOUTHWEST
LOOK
for the

fresh-from Keith's

Tues. "Listen for the Whistle" 570
Fri. 8:45 A.M.—KGKO Kilo.

Ben. E. Keith Co.

Longview — Abilene — Dallas — Fort Worth
Wichita Falls — Lubbock

Compliments
of
A
FRIEND

Res. 6-3396

Bus. 6-0193

Clyde Sellers

USED CARS

"Trade for Anything"
Auto Loans

2200 N. Main St. Ft. Worth, Texas

Polytechnic Assembly of God

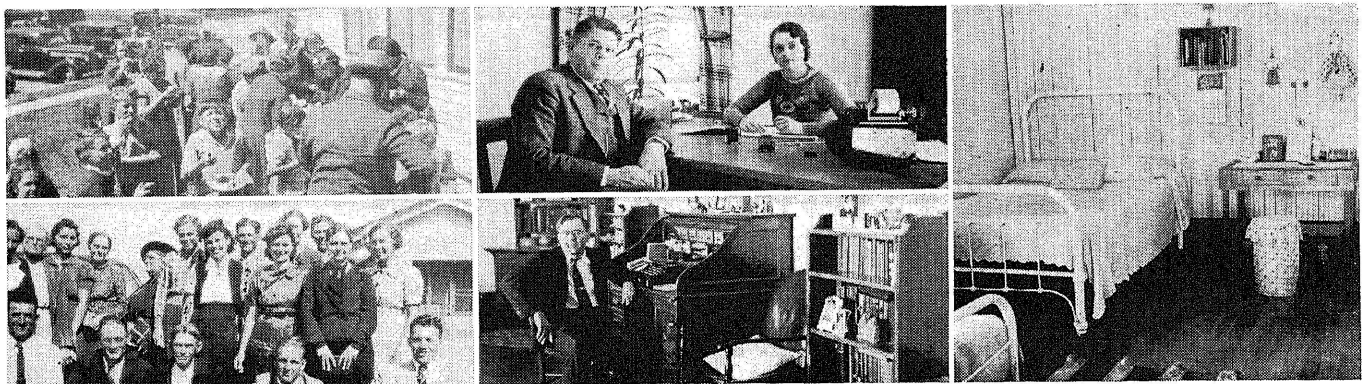
2420 Vaughn Boulevard
Fort Worth, Texas

Rev. R. R. Newby, *Pastor*
O. L. Worley, *S. S. Supt.*
Chester Dean, *Asst. Supt.*

Service Announcements

SUNDAY: S. School, 9:45 a. m.
Preaching, 11 a. m., 7:30 p. m.
Junior C. A.'s, 6:30 p. m.

Wk. Night: Tues. and Friday, 7:30 p. m.
W. M. C., Thursday 10 a. m.



TOP ROW:

Mansfield Rally. "Help yourself, Brother Zook."

Business Manager O. B. Braune and Ass't. Sec-Treas. Lorraine Wise.

"Home Sweet Home", Girls.

BOTTOM ROW:

Claude Rossignol and his Aledo church.

Is Brother Mac preparing exam questions?

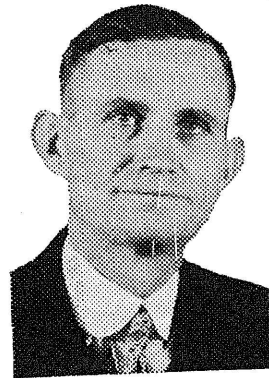
CONGRATULATIONS
AND BEST WISHES
TO THE SENIOR
GRADUATING CLASSES
OF SHIELD OF FAITH
BIBLE INSTITUTE

**STAFFORD
ENGRAVING
CO.**

FORT WORTH, TEXAS

FIRST ASSEMBLY OF GOD CHURCH

REV. A. C. BATES, Pastor 1326 SO. JENNINGS



REV. A. C. BATES

Sec.-Treas.—H. C. NOE

DEACON BOARD

W. H. WATSON
E. H. LANIER
T. H. HUFNER

SUNDAY SERVICES

Sunday School, 9:45 a.m.
Morning Worship, 11:00 a.m.

* C. A. Meeting, 6:30 p.m.

TUESDAY—C. A. Service.....7:30 p.m.
THURSDAY—W. M. C.....10:00 a.m.
Mid-Week Service7:30 p.m.

W E L C O M E !

"COME THOU WITH US AND
WE WILL DO THEE GOOD"

Compliments of

**Lonnie Smith
Cap and Gown Co**

Fort Worth

Texas

GREINE'S DRY GOODS CO.

1408-10 North Main Street

Complete Outfitters for the Family

Phone 6-2411

Fort Worth, Texas

Compliments
of

SOUTHERN ENGRAVING CO.

HOUSTON,
TEXAS

Subscribe for the "Shield of Faith Paper"
OFFICIAL ORGAN OF SHIELD OF FAITH BIBLE INSTITUTE
Published Monthly



S. GUY SHIELDS
Editor



MRS. JOE PIERSON
Ass't. Editor,