

THE
"SOUTHWESTERN"
OF
1938
Published by
The Senior Class
of
Southwestern Bible School

To Our Beloved Teacher
& His Dear Wife

Bro. + Sis. M^cGafferty

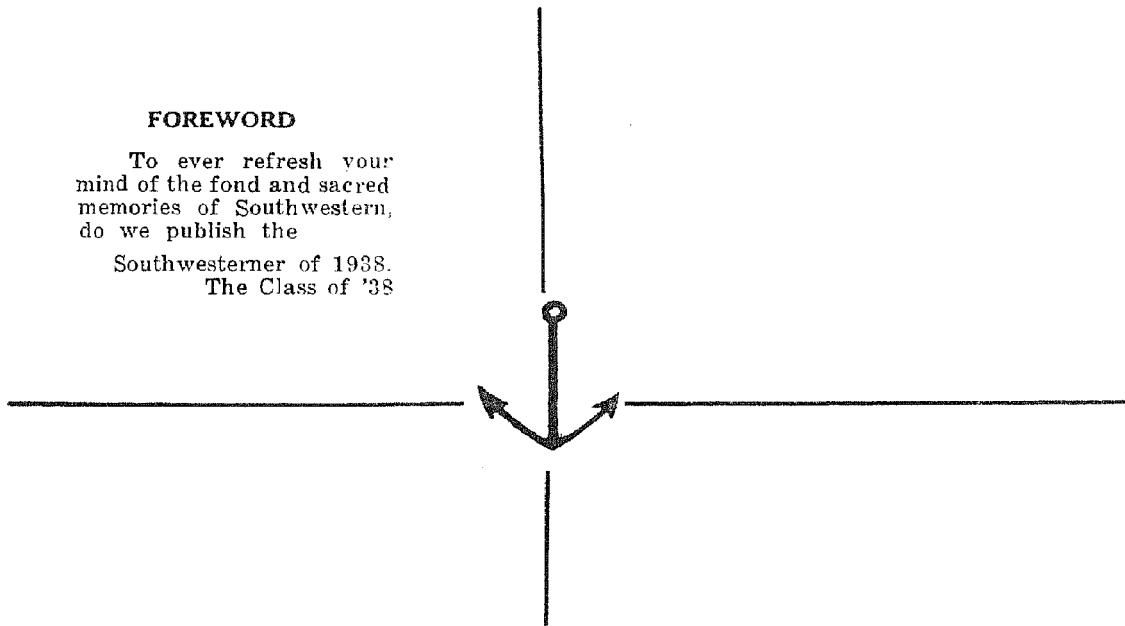
NEEDHAM MEMORIAL LIBRARY
Southwestern Assemblies of God College
Waxahachie, Texas 75165

73940
9

FOREWORD

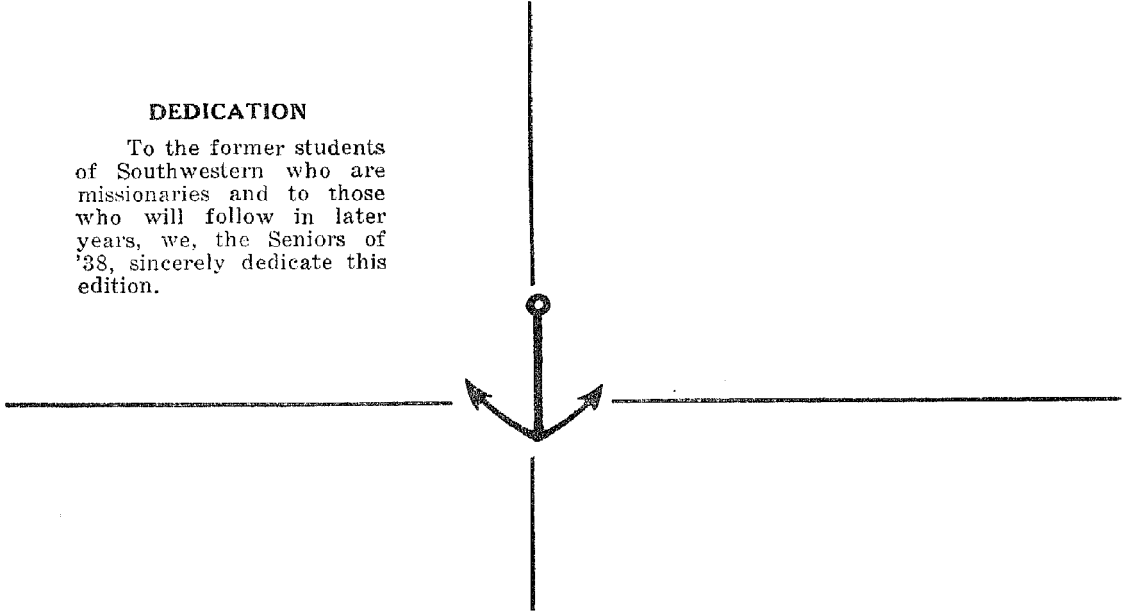
To ever refresh your
mind of the fond and sacred
memories of Southwestern,
do we publish the

Southwesterner of 1938.
The Class of '38



DEDICATION

To the former students of Southwestern who are missionaries and to those who will follow in later years, we, the Seniors of '38, sincerely dedicate this edition.



CONTENTS

Administration

Faculty

Student Teachers

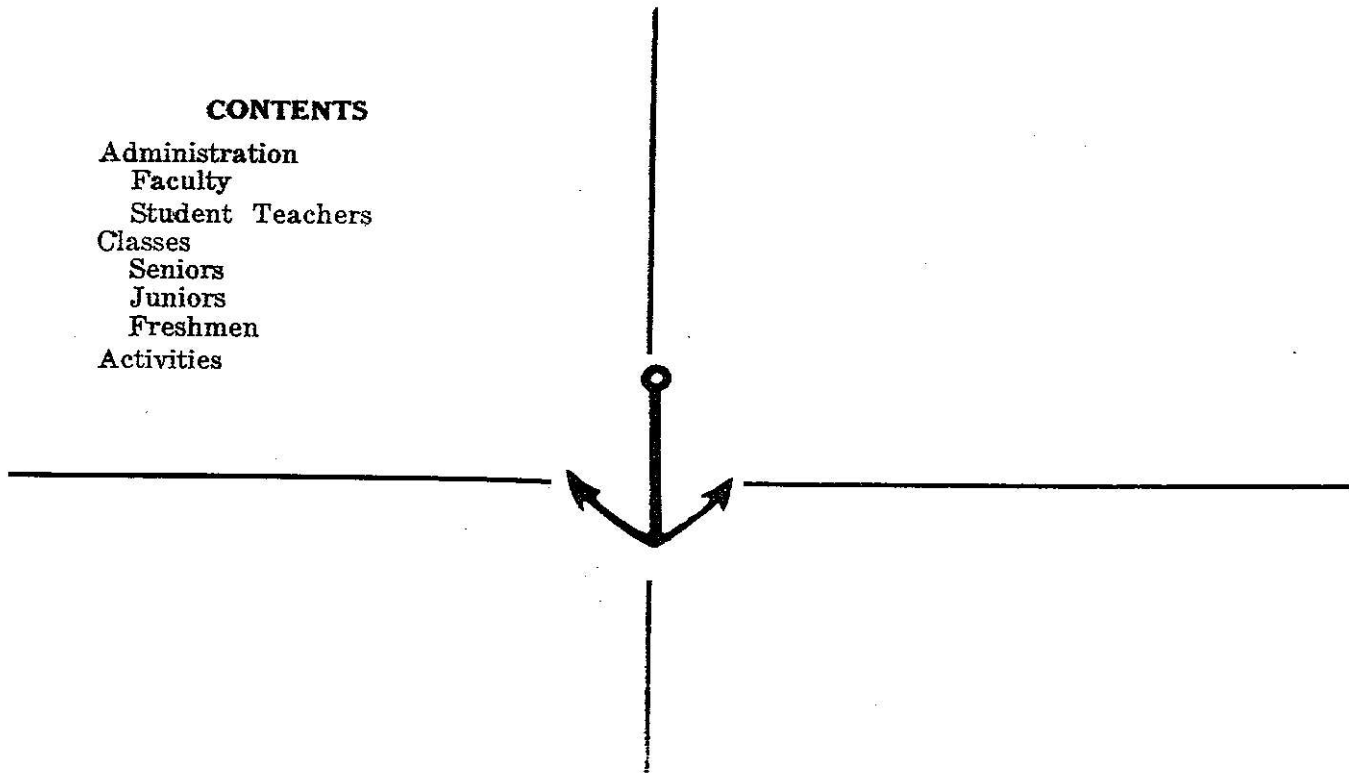
Classes

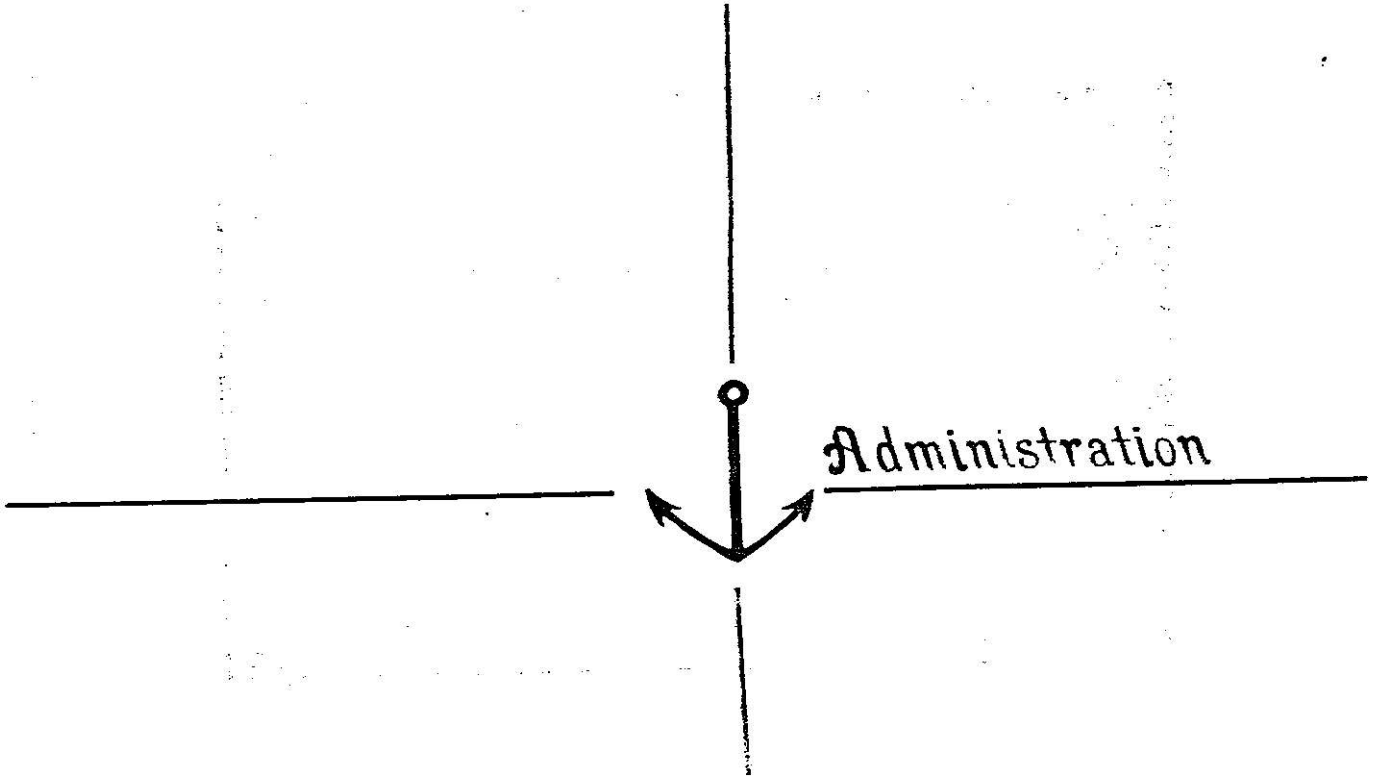
Seniors

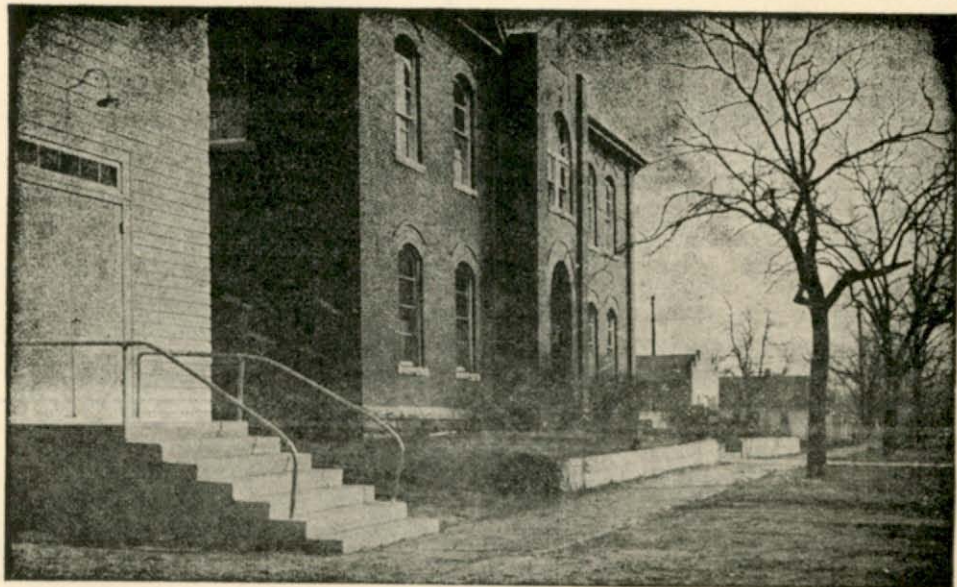
Juniors

Freshmen

Activities







Southwestern Bible School



DADDY NELSON

At the helm of Southwestern is "Daddy" Nelson courageously steering his "million dollar" boys and girls through a fundamental study of the Truth. "Daddy" Nelson has sacrificed, labored, and prayed that he might be able to carry the Gospel to the world through Southwestern's students.

In him we find one who has really consecrated his knowledge to God and who imparts his message to others in humility and in the power of God.

Brother Nelson has acquired the wonderful ability to speak only words that are necessary and uplifting. The words of the poet could well be his unspoken admonition:

"From Hebrew writ this saying sprung
'Though feet should slip, ne'er let the tongue.'
The sacred writer crowns the whole,
'Who keeps his tongue doth keep his soul.'"



MOTHER BAMFORD

"Set your affections on things above, not on things on the earth."

Working in harmony with Brother Nelson, is our dear "Mother" Bamford, who has been the ballast in Southwestern's spiritual boat for eleven years. Ever reproving and encouraging is she, that her children might attain to perfection in Christ.

She was chosen by Christ at an early age that she might be able to encourage young people, as Paul did, to "Let no man despise thy youth." Her life, a beautiful vessel that has been wrought by the potter's hand, is set before us for an example. We see one who has gone through sorrows, trials, disappointments, love, joy, and hopes of life's battle, courageous and full of faith. Peter pictured the plan the potter has used in shaping this beautiful vessel—adding virtue to virtue. These graces of a Christian life have fitted her for the position of "Mother" to a host of spiritual children under her training for Christian service.

From "Mother's" life we seem to hear these words: "Sail on, sail on, and on."



Robert L. McCutchan

Old Testament I
Bible Introduction II
Typology I
Articulation I
Prophecy II
Prophecy III
General Epistles III
False Cults II

— O —

Celia Swank

English I
English II
English III
Church History II
Missions III





F. R. Davidson
New Testament I
Bible Atlas I
Sunday School Efficiency II
Parliamentary Law II
Pastoral Theology III



Cecil J. Lowry
Dispensations I
Epistles II
Doctrine II
Epistles III
Doctrine III





Lottie Lee Flowers

Acts of the Apostles II

Public Speaking III

Homiletics II

Homiletics III

Poetical Books III

Greek

Hebrew

— O —

Jack P. Ireland

Vocal Music I

Vocal Music II

Vocal Music III

Orchestra

Rudiments of Music I

Deceased



